

# hwam

intelligent heat

Since 1973



HWAM 3760m


# MADE IN DENMARK

29-0892 UK

COLLECTION 2020/2021







*At HWAM, our talented organization works every day to produce unique and aesthetic products in collaboration with hand-picked quality suppliers to the delight of consumers all over the world. Our wood-burning stoves and stove inserts are manufactured at our factory in Hørning, south of Aarhus, in the heart of Denmark. Here functional design solutions are developed and produced at our modern factory hand in hand with traditional craftsmanship, which ultimately creates the perfect product.*

*At HWAM, we focus on climate-friendly and CO<sub>2</sub>-neutral combustion. We do this through our unique combustion systems which are built into all our products enabling the wood's energy to be utilized in the best and cleanest way possible. All our products are also developed in close collaboration with designers who have a deep understanding of our profession and who not only encapsulate current trends but also embrace the perfect and unique design that classics are made of.*

*Enjoy the new product catalogue. On behalf of us all at Team HWAM.*

Stefan Hvam Pedersen  
CEO, HWAM A/S

# CONTENTS

- 5 Why choose HWAM
- 6 Protect the environment
- 8 HWAM® SmartControl™
- 10 FAQ what to consider before choosing a wood-burning stove
- 12 Heat storage
- 14 Design your own HWAM wood-burning stove
- 16 Meet our designers
- 19 A HWAM wood-burning stove is born

## INSPIRATION

- 22 HWAM 2600
- 24 HWAM 3100
- 26 HWAM 3500
- 28 HWAM 3600
- 30 HWAM 3700
- 32 HWAM 4100
- 34 HWAM 4200
- 36 HWAM 4300
- 38 HWAM 4500
- 40 HWAM 4600
- 42 HWAM 5530
- 44 HWAM 7150
- 46 HWAM Classic 4
- 48 HWAM I 30/55 + HWAM I 30/65
- 50 HWAM I 40/55

## TECHNICAL SPECIFICATIONS

- 54 HWAM 2600
- 56 HWAM 3100
- 58 HWAM 3500
- 59 HWAM 3600
- 62 HWAM 3700
- 64 HWAM 4100
- 67 HWAM 4200
- 68 HWAM 4300
- 69 HWAM 4500
- 72 HWAM 4600
- 74 HWAM 5530
- 76 HWAM 7150
- 77 HWAM Classic 4
- 78 HWAM I 30/55
- 79 HWAM I 30/65
- 80 HWAM I 40/55
- 81 Approvals & registrations
- 82 Product overview
- 84 Test results
- 86 Distance to combustible materials



HWAM 3740m, style handle, black



Effortless combustion optimisation thanks to HWAM® SmartControl™



Efficient combustion and easy operation thanks to HWAM® Autopilot™



Danish design



Manufactured in Denmark for more than 45 years



HWAM's unique airwash system ensures correct air circulation and keeps the glass clean



Convenience and ease of operation thanks to HWAM® SmartControl™ or HWAM® Autopilot™



A unique closing mechanism seals the door tightly for optimum combustion



Optional fresh air kit to connect to external air



Convection distributes the heat in the room



Heat storage helps prolong the warmth in your room even after the fire has gone out







# WHY CHOOSE HWAM?

Design, functionality and sustainability are key factors in our philosophy. Based on these values, we have developed the mechanical **HWAM® Autopilot™**, an intelligent way to control the supply of air to the wood-burning stove, as well as the electronic **HWAM® SmartControl™**, which regulates the supply of air and optimises the combustion. You can read more about this from page 6-9 or on our website, [www.hwam.com](http://www.hwam.com).

Most wood-burning stoves probably look more or less the same to you. So, why choose a HWAM? HWAM has designed and produced wood-burning stoves in Denmark for more than 45 years. It has been an exciting and insightful journey and we have learnt so much from listening to our customers and partners. We test our wood-burning stoves thoroughly and we always give high priority to design, functionality and quality.

When you choose a HWAM wood-burning stove you can design it to your taste and needs. On page 14 you can learn more about the various options and get some inspiration. No matter which model you end up with we promise you to deliver a Danish-produced wood-burning stove of the highest quality. As all of our stoves are produced at our factory in Denmark we control the entire process from the very first design drawing till the stove is ready to leave the factory.





# PROTECT THE ENVIRONMENT

WE DO...

*“We constantly strive to make our wood-burning stoves and stove inserts more efficient and environmentally friendly. Therefore, our products are regularly put through a series of comprehensive tests to determine how they perform in different situations and at different temperatures and combustion rates. We do this to ensure that the wood-burning stoves and the stove inserts comply with both our own and the authorities’ stringent environmental requirements in every conceivable situation. We do this to ensure the best possible experience for the user and to protect the environment.”*





Nature needs protecting - now more than ever. You can make a big difference and leave a greener footprint for the enjoyment of future generations by introducing small changes in your life. Start by choosing a HWAM wood-burning stove.

All HWAM wood-burning stoves are equipped with **HWAM® Autopilot™** as standard to help you achieve good combustion. As the temperature rises and falls in the combustion chamber, a bimetallic spring will expand and contract, and regulate the air supply. When the fire is dying out, the damper will automatically open again, and you can add firewood or let the fire die out. If you prefer an electronic solution where an app reminds you when to add more firewood, then you should choose a wood-burning stove with **HWAM® SmartControl™**, an electronic system developed in collaboration with DTU (Technical University of Denmark) to help achieve the cleanest possible combustion.

Three essential elements are required to start a fire: the right amount of wood, heat and oxygen. To achieve the cleanest possible combustion, you need an accurate combination of these elements. It is essential that the temperature reaches **750°** Celsius as soon as possible, thereby reducing the risk of gas and particle emissions. This level is virtually impossible to achieve manually. A wood-burning stove with **HWAM® SmartControl™** will ensure that you achieve the optimum combination and thus very clean combustion.



# 3 SIMPLE STEPS

## TO CLEAN COMBUSTION & MORE QUALITY TIME WITH THE FAMILY

You practically only have to lift a finger, the **HWAM® SmartControl™** will do the rest.

Are you tired of spending a lot of time and energy on trying to achieve clean combustion? With **HWAM® SmartControl™** you will achieve this in 3 simple steps. Leaving you time for the really important things in life. Read more and watch our videos on [www.hwam.com](http://www.hwam.com) or visit your local HWAM retailer.



Light the fire as usual



Set the desired room temperature on the app



Receive a notification when it is time to restoke





SAVE UP TO  
**50%**  
 ON YOUR FIREWOOD  
 CONSUMPTION\*

PROTECT THE  
  
 ENVIRONMENT

CLEANER  
  
 COMBUSTION\*

ENJOY THE  
  
 COMFORT



FIREWOOD CONSUMPTION  
 WITHOUT  
 HWAM® SmartControl™



FIREWOOD CONSUMPTION\*  
 WITH  
 HWAM® SmartControl™



WINNER OF  
 PRISEN 2016

\* Compared to a HWAM wood-burning stove without HWAM® SmartControl™

# WHAT TO CONSIDER BEFORE CHOOSING A WOOD-BURNING STOVE

**Taste and style vary from person to person, so here we will let you be the expert. However, before you buy a wood-burning stove, there are a few things worth considering.**

## **Why do you want a wood-burning stove?**

Is it because you live in a cold house? Do you want to save money on the heating bill, or is it for the sake of the cosy atmosphere?

## **How many m<sup>2</sup> are to be heated?**

It is important that the heat emitted by the wood-burning stove is adequate for the m<sup>2</sup> to be warmed up. As a rule of thumb, you can assume that approximately 1kW is required to heat 20 m<sup>2</sup>, provided the house is reasonably well insulated. Ask your HWAM dealer for more information.

## **How easy should it be?**

All HWAM stoves are equipped with HWAM® Autopilot™ as standard, an automatic air control that ensures good combustion. If you would like it as easy as it comes, then choose a model with built-in HWAM® SmartControl™. The only thing you need to do is light the fire as usual, set the temperature via an app on your smartphone and then enjoy the heat and the dancing flames. You will receive a message through your app when it is time to add new firewood.

## **Requirements for the location?**

Are there any special constructions in your home that render installation of the wood-burning stove impossible in certain areas? Is there anything you should be aware of in relation to combustible material?

## **Requirements for new houses?**

If you live in a newly built house, you may need to install a fresh air system in your wood-burning stove, as newly built houses are very well insulated, and the air circulating in the house is often reused in the ventilation system. This means that there will not be enough air in the house for neither lighting up nor combustion.

## **Requirements for chimney & smoke pipe**

The chimney must be of a sufficient height to enable an adequate draft and to prevent smoke problems. The stove requires a draft of at least 11 Pa. The chimney must have a minimum opening equivalent to Ø 15 cm. The chimney opening should always be at least the size of the outlet socket of the stove. The chimney must have an easily accessible soot door. Smoke pipe and chimney must always be suitable for a stove connection. Ask your HWAM dealer for more information.

## **Requirements for floors and/or walls**

You should check whether the floor on which your wood-burning stove will be standing is stable enough to carry the weight, or whether the wall which your stove or insert will hang on/be built into is able to withstand weight. We recommend that you consult a specialist. If the wood-burning stove is placed on a flammable floor, make sure to protect the floor from embers falling out. You can choose tiles, sheet metal or a glass plate depending on what style you prefer. See more about distances to combustible material on page 86.

## **Talk to an expert**

Once you have considered some of these questions, it will hopefully be easier for you to make a decision. If you are still in doubt, you can always visit your local HWAM retailer for a talk about the right choice for you.









HWAM 4660C

# HEAT STORAGE & STONE CLADDING

When you choose a wood-burning stove with stone cladding, you get a stove with a unique appearance, since every stone has its own distinctive feature. Besides, there are other tangible benefits.

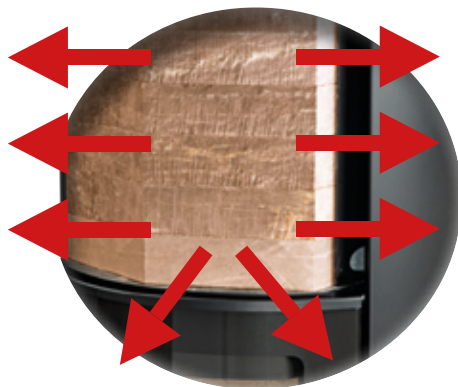
We know of heat storage from masonry stoves, where the heat is stored in the stones surrounding the combustion chamber. Heat storage in a wood-burning stove is the stove's ability to quickly and comfortably distribute the convection heat in the room combined with the masonry stove's capacity for heat storage.

Selected HWAM models are designed with a heat storage compartment that can be filled with stones with a special capacity for storing the heat from the wood-burning stove and then slowly give it off to the room. This means that you can enjoy the heat long after the fire has gone out.

If you want a wood-burning stove that stores the heat, you can choose one of the following HWAM models with stone cladding: 3520, 3640, 3660, 4240, 4340, 4540, 4560, 4640, 4660 and 7150.

If you would like a stove with a heat storage compartment, you can choose between these HWAM models: 3130, 3520, 3650, 3660, 4150, 4160, 4550, 4560, 4660 and 7150.

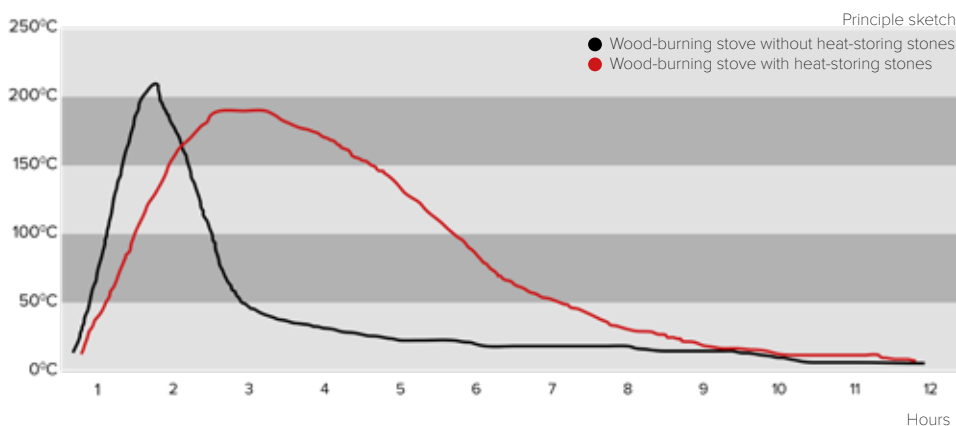
Below is an illustration of a wood-burning stove with and without heat-storing stones.



Heat-storing stones



HWAM 4660m







HWAM 3120c

**Height**

70 cm - 168,5 cm.

**Flue outlet**

Top or back.

**Type**

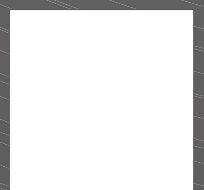
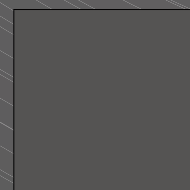
Wall mounted, pedestal, floor model, plinth, insert, modular.

**Door**

Most models are available with two types of doors, a classic cast iron door (c) or a modern glass door (m). Our inserts are available in a variety of models with a lift-up door, left or right hinged door.

**Colours\***

Our m-models (glass door) are available in black and grey. Our c-models (cast iron door) are available in black and grey. Our models with stone cladding are available in black and grey. Selected series are available in white.



# DESIGN YOUR OWN HWAM WOOD-BURNING STOVE

Once you have decided which model best suits your needs, it is time to choose the perfect look. There are many ways to tailor your stove to exactly fit your style and home. What do you prefer? A classic look? A raw look? Or a modern look?

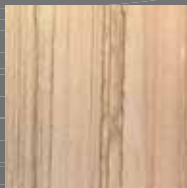
Under our technical specifications from page 53, you can see all our models. Take a look at the possibilities and find inspiration on how to put together your very own HWAM model.

## Stone cladding

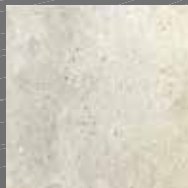
A wood-burning stove with stone cladding has two functions. Visually, the stone creates a unique appearance, with no piece of stone being the same. Purely functionally, the heat-storing capacity of the stone extends the heat effect.



Soapstone



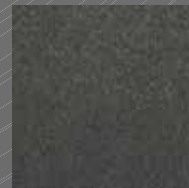
Tobacco



San Sebastian



Rosewood



Nox Petra

## Function

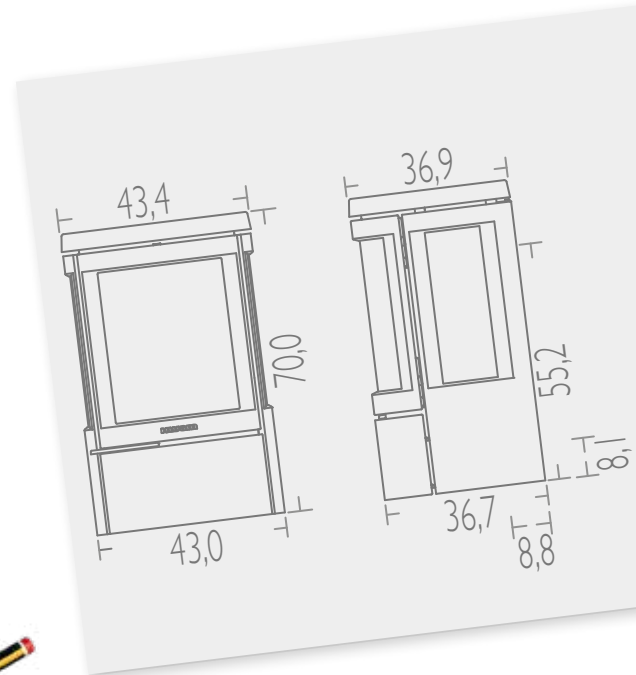
All HWAM wood-burning stoves are equipped with HWAM® Autopilot™ as standard to help you achieve good combustion. As the temperature rises and falls in the combustion chamber, a bimetallic spring will expand and contract, thereby regulating the supply of air. When the fire is dying out, the damper will automatically open again, and you can add firewood or let the fire die out.

Would you like it as easy as it comes? Then you should choose a model with built-in HWAM® SmartControl™. HWAM® SmartControl™ is electronic control of the air for optimum combustion. The only thing you need to do is light the fire as usual, set the temperature via an app on your smartphone and enjoy the heat and the dancing flames. You will receive a message through the app when it is time to add more firewood.

# MEET OUR DESIGNERS

When design meets function something unique is created. It is difficult to describe in words. It must be seen, touched and experienced. HWAM has a long tradition of working together with talented Danish designers. The combination of their sense of aesthetics and detail and the know-how of our experts results in functional handicraft.

The development of a HWAM wood-burning stove always starts with the design, after which the construction process begins.



## Strand + Hvas



The designer team Strand + Hvas consists of Christina Strand and Niels Hvas, who specialise in industrial furniture design. Their style is classic Danish: minimalistic lines and functional forms. They strive to create aesthetic synergy between form and material.

Strand + Hvas have won several design awards, including one for the design of a chair for the Danish crown prince.

## Heiko Heybey



German furniture architect Heiko Heybey has dedicated himself to creating modern and everyday-friendly designs.

In his quest to link commercial design with quality craftsmanship, Heiko Heybey has designed countless beautiful wood-burning stoves.

## Anders C. FASTERHOLDT



Anders C. FASTERHOLDT always focuses on the function of the wood-burning stove, the needs of the stove-owner and the aesthetic sensuality. He creates stoves and solutions that work in everyday life.

As a designer, he strives to remove all unnecessary noise so that the design is as clean as possible.







**Sørig & Jacobsen**



The designer team Sørig & Jacobsen consists of Henrik Sørig and Tobias Jacobsen.

Their design tells a story and plays on the harmony between function, form, and technique. They have a keen eye for details and work with simplicity of appearance and design. Good design is when the stove matches the user's needs perfectly.



**MADE IN  
DENMARK**

DANISH DESIGN

MANUFACTURED IN DENMARK

DANISH QUALITY





# A HWAM WOOD-BURNING STOVE IS BORN From idea to final product...

## **From idea to wood-burning stove**

We believe that innovation and development go hand in hand with production. Take production out of the equation, and you lose the practical knowledge that makes it possible to translate design ideas into real stoves that meet aesthetic as well as functional needs and demands. This is why all our wood-burning stoves and inserts are manufactured at our factory in Hørning and have been for more than 45 years. The process starts with our talented designers whom we have worked with for years. When their ideas and visions have manifested themselves in sketches, they open a dialogue with our designers and sales management for the development of a wood-burning stove or an insert that satisfies the demands of our customers.

## **Prototypes & tests**

When the design drawings are in place, the process moves into our development workshop at the factory in Hørning, where prototypes of the new stove will be prepared. The stove is then tested by our combustion expert to ensure that it meets the stringent requirements for a wood-burning stove. When the wood-burning stove or the insert burns as it should, it is sent for external testing in Denmark and abroad for final approval at a certified test institute.

## **First production**

Once the stove has been approved in relation to combustion and safety requirements, it will be put into production. Each single HWAM wood-burning stove is produced to order at our modern factory, and the processes are implemented and supervised by our highly skilled employees. This ensures a stable flow, better control of production and thus a final stove of outstanding quality.

## **The devil is in the detail**

Our goal is to develop wood-burning stoves and inserts with a unique design which appeal to the quality conscious consumer. And this is where the small details make the difference. One of the features that makes a HWAM stove so unique is a bimetallic spring HWAM® Autopilot™ which all our stoves are equipped with. It automatically controls the all-important combustion air inside the wood-burning stove, unlike other stoves, where you must adjust the air in order to obtain good combustion.

We have made it easy for you. This way, you can concentrate on enjoying the warmth and the beautiful enchanting fire.



A bimetallic spring, which automatically controls the combustion air inside the wood-burning stove, is standard in all HWAM wood-burning stoves and inserts.







# INSPIRATION

Discover our range, which offers something for everyone. For detailed information on the entire range, see the technical specifications from page 53.

22	HWAM 2600
24	HWAM 3100
26	HWAM 3500
28	HWAM 3600
30	HWAM 3700
32	HWAM 4100
34	HWAM 4200
36	HWAM 4300
38	HWAM 4500
40	HWAM 4600
42	HWAM 5530
44	HWAM 7150
46	HWAM Classic 4
48	HWAM I 30/55 + HWAM I 30/65
50	HWAM I 40/55



HWAM 2620c

## The HWAM 2600-series

For more information on the HWAM 2600-series, see page 54.



HWAM 2610c with side glass and plinth



HWAM 2610m with side glass



HWAM 2620c on pedestal



HWAM 2630c with side glass



HWAM 2640c



HWAM 2640m





## SMALL, EFFICIENT & SOPHISTICATED

### HWAM 2620 Design by Sørig & Jacobsen

With its practical size, HWAM 2620 fits into small and large homes alike and creates a cosy gathering point for you and the ones you hold dear. HWAM 2620 is characterised by its beautiful rounded front, which, in combination with very simple lines, lends the stove a timeless expression. A great little wood-burning stove that fits into most homes. Let the flames seduce you and create a pleasant atmosphere in your home. For more information about the HWAM 2600-series, see page 54.



### Technical data

Capacity	2-6 kW
Nominal heat output	4.5 kW
Smoke outlet	Ø 150 mm
Energy efficiency class	<b>A</b>
Net efficiency	80.3%
Door	Classic or modern
Chimney draught, min. (recommended)	12 Pa
Width of combustion chamber	27 cm

### Approvals & registrations

- EN 13240
- NS 3058/3059
- BlmSchV Stufe 2
- LRV
- RLU\*
- Brændeovnsbekendtgørelsen 2018



\* Not HWAM 2610 and HWAM 2620

### Combustion air system





HWAM 3120m

### The HWAM 3100-series

For more information on the HWAM 3100-series, see page 56.



HWAM 3110c with plinth



HWAM 3110m



HWAM 3110m on pedestal



HWAM 3120c



HWAM 3120m



HWAM 3130m



## POWERFUL & EYE-CATCHING

### HWAM 3120 Design by Anders C. Fasterholdt

A timeless wood-burning stove that helps create a nice cosy corner in your home. HWAM 3120 is characterised by its beautiful elliptical shape that makes it the centrepiece of the room. The perfectly curved glass window offers an impressive view of the flames and acts as a powerful eye-catcher. It does not always have to be four-square. For more information about the HWAM 3100-series, see page 56.



HWAM 3120C

### Technical data

Capacity  
Nominal heat output  
Smoke outlet  
Energy efficiency class HWAM® Autopilot™/ HWAM® SmartControl™  
Net efficiency HWAM® Autopilot™/ HWAM® SmartControl™  
Door  
Chimney draught, min. (recommended)  
Width of combustion chamber

2-7 kW  
4.5 kW  
Ø 150 mm  
A / A+  
78.1/83.4%  
Classic or modern  
12 Pa  
33 cm

### Approvals & registrations

- EN 13240
- NS 3058/3059
- Art. 15a\* \*\*
- BlmSchV Stufe 2
- LRV
- RLU\*\*
- Brændeovnsbekendtgørelsen 2018



\* Not HWAM® Autopilot™ \*\* Not HWAM 3110 \*\*\* Only HWAM HWAM 3110 and 3120

### Combustion air system







HWAM 3520c

### The HWAM 3500-series

For more information on the HWAM 3500-series, see page 58.



HWAM 3520c



HWAM 3520m



HWAM 3520c with soapstone



## ELEGANT BEAUTY WITH CLEAR LINES

### HWAM 3520 Design by Anders C. Fasterholdt

HWAM 3520 is an invitation to peace and quiet and a break from the hustle and bustle of everyday life. A wood-burning stove with character whose sculptural idiom contributes to a classic expression in your home. The round forms give the stove character and allow it to be part of the decor, even when not in use. For more information about the HWAM 3500-series, see page 58.

Choose between  
5 different types of  
stone cladding

For more information  
see page 58



### Technical data

Capacity  
Nominal heat output  
Smoke outlet  
Energy efficiency class HWAM® Autopilot™/ HWAM® SmartControl™  
Net efficiency HWAM® Autopilot™/ HWAM® SmartControl™  
Door  
Chimney draught, min. (recommended)  
Width of combustion chamber

2-7 kW  
4.5 kW  
Ø 150 mm  
A / A+  
78.1/83.4%  
Classic or modern  
12 Pa  
33 cm

### Approvals & registrations

- EN 13240
- NS 3058/3059
- Art. 15a\*
- BlmSchV Stufe 2
- LRV
- RLU
- Brændeovnsbekendtgørelsen 2018

\* Not HWAM® Autopilot™



### Combustion air system





HWAM 3630m

**The HWAM 3600-series**

For more information on the HWAM 3600-series, see page 59.



HWAM 3630c with side glass



HWAM 3640c with soapstone



HWAM 3640m



HWAM 3650c with side glass



HWAM 3650m with side glass



HWAM 3660c



HWAM 3660m



HWAM 3660m with soapstone





## PERFECT PROPORTIONS

### HWAM 3630 Design by Sørig & Jacobsen

Create the most beautiful frames in your home with room for good company and good times in front of the stove. Magical moments when you forget about time and place and just live for the moment. The modern technology is hidden behind HWAM 3630's minimalistic exterior to allow you to enjoy the fire, the cosiness and the heat in style. For more information about the HWAM 3600-series, see page 59.

Choose between  
5 different types of  
stone cladding

For more information  
see page 59



HWAM 3640C

### Technical data

Capacity	3-9 kW
Nominal heat output	6.0 kW
Smoke outlet	Ø 150 mm
Energy efficiency class HWAM® Autopilot™/ HWAM® SmartControl™	<b>A</b> / <b>A+</b>
Net efficiency HWAM® Autopilot™/ HWAM® SmartControl™	78.3/80.7%
Door	Classic or modern
Chimney draught, min. (recommended) HWAM® Autopilot™/ HWAM® SmartControl™	11/12 Pa
Width of combustion chamber	35 cm

### Approvals & registrations

- EN 13240
- NS 3058/3059
- Art. 15a\*
- BlmSchV Stufe 2
- LRV
- RLU
- Brændeovnsbekendtgørelsen 2018



\* Not HWAM® Autopilot™ \*\* Not HWAM® SmartControl™ \*\*\* Not HWAM 3660

### Combustion air system





HWAM 3740m

**The HWAM 3700-series**

For more information on the HWAM 3700-series, see page 62.



Top outlet



Rear outlet



Style handle



Style handle black



Traditional handle



HWAM 3740c traditional handle



HWAM 3740m style handle



HWAM 3760m traditional handle



HWAM 3760m style handle



## STYLISH DESIGN

### HWAM 3740 Design by Sørig & Jacobsen

With the HWAM 3700 series, the designers have created a slender wood-burning stove, whose design language is reminiscent of straight columns. The range is available with the classic HWAM handle or with a new type of handle integrated into the wood-burning stove design to offer a calm and unbroken look. At the top of the wood-burning stove, the designers have created a convection groove which emphasises the sleek shape of the stove and completes the stylish look. If the flue pipe is to be connected from the rear of the wood-burning stove, the stove comes with a solid top plate that supports the stylish look. For more information on the HWAM 3700-serien, se side 62.



HWAM 3740c with style handle

CHOOSE  
BETWEEN  
3 DIFFERENT  
HANDLES

### Technical data

Capacity	2-7 kW
Nominal heat output	4.5 kW
Smoke outlet	Ø 150 mm
Energy efficiency class HWAM® Autopilot™/ HWAM® SmartControl™	<b>A</b> / <b>A+</b>
Net efficiency HWAM® Autopilot™/ HWAM® SmartControl™	78.1/82.9%
Door	Classic or modern
Chimney draught, min. (recommended)	12 Pa
Width of combustion chamber	33 cm

### Approvals & registrations

- EN 13240
- NS 3058/3059\*\*
- Art. 15a\*
- BlmSchV Stufe 2
- LRV\*\*
- Brændeovnsbekendtgørelsen 2018

\* Only HWAM® SmartControl™ \*\* Pending registration



### Combustion air system





# SLENDER & CYLINDRICAL

## HWAM 4130 & 4140 Design by Heiko Heybey

The HWAM 4100 series was inspired by the most complete of all forms: the circle. By choice, the design is as pure as possible, as evidenced by the simple joints and the slim handle. A solid top plate gives the stove its finishing touch. The cylindrical shape of the wood-burning stove fits well into a corner or up against a straight wall. For more information on the HWAM 4100-series, see page 64.



HWAM 4130



### The HWAM 4100-series

For more information on the HWAM 4100-series, see page 64.



Top outlet



Rear outlet



HWAM 4110 with side glass



HWAM 4120



HWAM 4130 with side glass



HWAM 4140



HWAM 4150 with side glass



HWAM 4160



HWAM 4140

## Technical data

Capacity	2-7 kW
Nominal heat output HWAM® Autopilot™/ HWAM® SmartControl™	4.7/4.9 kW
Smoke outlet	Ø 150 mm
Energy efficiency class HWAM® Autopilot™/ HWAM® SmartControl™	<b>A+</b> / <b>A+</b>
Net efficiency HWAM® Autopilot™/ HWAM® SmartControl™	82/86%
Door	Left hinged
Chimney draught, min. (recommended)	12 Pa
Width of combustion chamber	28.4-35.8 cm

## Approvals & registrations

- EN 13240
- NS 3058/3059
- Art. 15a
- BImSchV Stufe 2
- LRV
- Brændeovnsbekendtgørelsen 2018



\* Pending registration

## Combustion air system



# SOFT CURVED LINES

## **HWAM 4240** Design by Heiko Heybey

The HWAM 4200-series is characterized by soft curved lines and a distinctive steel frame around the door. The design is completed with hidden hinges and a large window offering you a great view of the dancing flames. For more information on the HWAM 4100-serien, see page 67.



HWAM 4240, San Sebastian



Choose between  
5 different types of  
stone cladding

For more information  
see page 67

## **The HWAM 4200-Series**

For more information  
on the HWAM 4200-series,  
see page 67.



HWAM 4240

HWAM 4240  
with soapstone

HWAM 4240  
with Nox Petra

HWAM 4240  
with Tobacco





HWAM 4240

## Technical data

Capacity  
 Nominal heat output HWAM® Autopilot™/ HWAM® SmartControl™  
 Smoke outlet  
 Energy efficiency class HWAM® Autopilot™/ HWAM® SmartControl™  
 Net efficiency HWAM® Autopilot™/ HWAM® SmartControl™  
 Door  
 Chimney draught, min. (recommended)  
 Width of combustion chamber

2-7 kW  
 4.7/4.9 kW  
 Ø 150 mm  
**A+ / A+**  
 82/86%  
 Left hinged  
 12 Pa  
 28.4-35.8 cm

## Approvals & registrations

- EN 13240
- NS 3058/3059
- Art. 15a
- BImSchV Stufe 2
- LRV
- Brændeovnsbekendtgørelsen 2018



\* Pending registration

## Combustion air system





HWAM 4340

### The HWAM 4300-series

For more information on the HWAM 4300-series, see page 68.



HWAM 4340



HWAM 4340 with soapstone



HWAM 4340 with Rosewood



HWAM 4340 with Tobacco



Choose between  
5 different types of  
stone cladding

For more information  
see page 68

## A MODERN INTERPRETATION OF CLASSIC DESIGN

### HWAM 4340 Design by Heiko Heybey

The HWAM 4300-series is a modern interpretation of the classic wood-burning stoves of the 70s with a clear division between wood magazine, combustion chamber and top plate but a more experimental approach to the side elements. The 4300 series presents itself beautifully with its slender oval profile, a wide combustion chamber that can take firewood of up to 33 cm in length, which ensures efficient heating of large rooms. The frame less glass door gives the series a light and modern look and makes it fit for most homes. For more information on the HWAM 4300-serien, see page 68.



### Technical data

Capacity  
Nominal heat output  
Smoke outlet  
Energy efficiency class HWAM® Autopilot™/ HWAM® SmartControl™  
Net efficiency HWAM® Autopilot™/ HWAM® SmartControl™  
Door  
Chimney draught, min. (recommended)  
Width of combustion chamber

3-8 kW  
6.0 kW  
Ø 150 mm  
**A** / **A+**  
80/82%  
Left hinged  
12 Pa  
38.2 cm

### Approvals & registrations

- EN 13240
- NS 3058/3059
- Art. 15a
- BlmSchV Stufe 2
- LRV
- Brændeovnsbekendtgørelsen 2018

\* Pending registration



### Combustion air system







HWAM 4520c

## The HWAM 4500-series

For more information on the HWAM 4500-series, see side 69.



HWAM 4520c  
HWAM® Autopilot™



HWAM 4510c  
with low base  
HWAM® Autopilot™



HWAM 4510c  
with low plinth  
HWAM® Autopilot™



HWAM 4520m  
with high plinth



HWAM 4530c  
with side glass



HWAM 4530m  
with side glass



HWAM 4540c  
with soapstone



HWAM 4550m  
with side glass



HWAM 4560c



HWAM 4560m  
with soapstone



## SLIGHTLY MORE EDGE

### HWAM 4520 Design by Sørig & Jacobsen

Decorate your home with HWAM 4520, which oozes elegance and exclusivity, and let its attractive design contribute to a timeless Scandinavian look. This sophisticated wood-burning stove offers you an impressive view of the flames. A timeless wood-burning stove with excellent and clean combustion. For more information about the HWAM 4500-series, see page 69.

Choose between  
5 different types of  
stone cladding\*\*

For more information  
see page 69



HWAM 4510m, low base

### Technical data

Capacity	3-7 kW
Nominal heat output	4.9 kW
Smoke outlet	Ø 150 mm
Energy efficiency class HWAM® Autopilot™/ HWAM® SmartControl™	<b>A+</b> / <b>A+</b>
Net efficiency HWAM® Autopilot™/ HWAM® SmartControl™	81.6/81.0%
Door	Classic or modern
Chimney draught, min. (recommended)	12 Pa
Width of combustion chamber	35.8 cm

### Approvals & registrations

- EN 13240
- NS 3058/3059
- Art. 15a
- BlmSchV Stufe 2
- LRV
- RLU
- Brændeovnsbekendtgørelsen 2018



\* Only HWAM 4540 and HWAM 4560

### Combustion air system



1) Not HWAM 4510 and HWAM 4520 when placed on the floor

# WIDE & BREATH TAKING

## HWAM 4660 Design by Sørig & Jacobsen

HWAM 4660 has a simple, architectural design with unique details and the iconic HWAM handle. The extra-wide HWAM 4600 models allow an even better view of the flames. The extra spacious combustion chamber allows firewood of up to 45 cm in length. Sit back and enjoy the flames for even longer. For more information about the HWAM 4600-series, see page 72.



HWAM 4660m



Choose between  
5 different types of  
stone cladding

For more information  
see page 72

## The HWAM 4600-series

For more information  
on the HWAM 4600-series,  
see page 72.



HWAM 4620c  
HWAM® Autopilot™



HWAM 4640m



HWAM 4640m  
with soapstone



HWAM 4660c



HWAM 4660m  
with Tobacco





HWAM 4660c

## Technical data

Capacity  
 Nominal heat output  
 Smoke outlet  
 Energy efficiency class HWAM® Autopilot™/ HWAM® SmartControl™  
 Net efficiency HWAM® Autopilot™/ HWAM® SmartControl™  
 Door  
 Chimney draught, min. (recommended)  
 Width of combustion chamber

3-9 kW  
 7.0/8.0 kW  
 Ø 150 mm  
 A / A+  
 80/81%  
 Classic or modern  
 12 Pa  
 49 cm

## Approvals & registrations

- EN 13240
- NS 3058/3059
- Art. 15a
- BlmSchV Stufe 2
- LRV
- RLU
- Brændeovnsbekendtgørelsen 2018



\* Not HWAM® SmartControl™

## Combustion air system



1) Not HWAM 4620



**HWAM 5530m**

### The HWAM 5530-series

For more information on the HWAM 5530-series, see page 74.







# A MODULAR STOVE TO YOUR TASTE

## HWAM 5530 Design by Sørig & Jacobsen

Two, three or four? Whatever the number of modules, the result is always the same: a stylish wood-burning stove of a modern Danish design. HWAM 5530 is the name of our new modular wood-burning stove. Whether you choose one or several modules, the stove will always appear as one integrated unit. The design is streamlined and functional. The sharp angles tell the story of Danish design and attention to detail. The functions are unmistakable. Keep your firewood in the modules or take a break and enjoy the heat. Add a stylish cushion on top of the side module to enjoy the heat and the crackling sounds close up. Choose high and/or low modules, with or without drawers. You decide! For more information on HWAM 5530, see page 74.



### Technical data

Capacity	4-8 kW
Nominal heat output HWAM® Autopilot™/ HWAM® SmartControl™	6.4/6.0 kW
Smoke outlet	Ø 150 mm
Energy efficiency class HWAM® Autopilot™/ HWAM® SmartControl™	<b>A</b> / <b>A+</b>
Net efficiency HWAM® Autopilot™/ HWAM® SmartControl™	80/83%
Door	Classic or modern
Door	Left or right hinged
Chimney draught, min. (recommended) HWAM® Autopilot™/ HWAM® SmartControl™	11/12 Pa
Width of combustion chamber	62.7 cm

### Approvals & registrations

- EN 13229
- NS 3058/3059
- Art. 15a
- BlmSchV Stufe 2
- LRV
- RLU
- Brændeovnsbekendtgørelsen 2018



\* HWAM® Autopilot™: yes. HWAM® SmartControl™: pending registration

### Combustion air system





# INVITE NATURE INTO YOUR HOME

## **HWAM 7150** Design by Sørig & Jacobsen

Some things light up even when not in use. This is true of HWAM 7150. Make your home more dynamic by mixing unique natural stone with a rigorous design — a dramatic contrast you will never get tired of looking at. Enjoy the dancing flames and the stone with the impress of nature. For more information about HWAM 7150, see page 76.



HWAM 7150c

### **The HWAM 7150**

For more information  
on HWAM 7150,  
see page 76.



HWAM 7150c  
with soapstone



HWAM 7150c

## Technical data

Capacity	2-7 kW
Nominal heat output	4.5 kW
Smoke outlet	Ø 150 mm
Energy efficiency class HWAM® Autopilot™/ HWAM® SmartControl™	<b>A<sup>+</sup></b> / <b>A<sup>+</sup></b>
Net efficiency HWAM® Autopilot™/ HWAM® SmartControl™	80.9/80.5%
Door	Classic or modern
Chimney draught, min. (recommended)	12 Pa
Width of combustion chamber	33 cm

## Approvals & registrations

- EN 13240
- NS 3058/3059
- Art. 15a
- BImSchV Stufe 2
- LRV
- RLU
- Brændeovnsbekendtgørelsen 2018



## Combustion air system





**HWAM Classic 4**

### The HWAM Classic-series

For more information on the HWAM Classic-series, see page 77.



HWAM Classic 4



HWAM Classic 4 with plinth



HWAM Classic 4 with plinth & baking oven





OPTIONAL  
FRESH AIR KIT  
TO CONNECT  
TO EXTERNAL  
AIR

For more information  
see page 77

## WE LOVE THE CLASSICS

### **HWAM Classic 4** **Design by Anders C. Fasterholdt**

HWAM Classic 4 is a classic stove that has been very popular ever since it saw the light of day more than 30 years ago. The HWAM Classic 4 series is available in different versions. The basic stove has hobs for heating food. You can add a handy baking oven, that makes it possible to utilize the heat to bake pizzas, bread, and pastries. Enjoy the smell of freshly baked bread spreading to the house while you enjoy a quiet moment in front of the dancing flames. By adding a plinth, you can store your wood underneath the wood-burning stove – decorative and practical. As something new we can offer fresh air system for this oven. Who could ask for more? For more information about the HWAM Classic-series, see page 77.



HWAM Classic 4 with plinth

### **Technical data**

Capacity  
Nominal heat output  
Smoke outlet  
Energy efficiency class  
Net efficiency  
Door  
Chimney draught, min. (recommended)  
Width of combustion chamber

3-8 kW  
8 kW  
Ø 150 mm  
**A**  
Classic  
12 Pa  
40 cm

### **Approvals & registrations**

- EN 13240
- BlmSchV Stufe 2
- LRV



### **Combustion air system**



# STYLISH & CONTEMPORARY

## HWAM I 30/55 & I 30/65 Design by Strand + Hvass

Good time in front of the fire, the perfect place to unwind in peace and quiet together with friends and family. Despite its fashionable expression, these models fit most homes. Underline the timeless decor of your home or create a nice contrast to traditional or modern decor. The wide glass and the large combustion chamber offer an impressive view of the flames. The glass door is available in two variants, one that can be side hinged and one that can be raised. For more information on HWAM I 30/55 and I 30/65, see page 78.



HWAM I 30/55



## HWAM I 30/55, I 30/65

For more information on HWAM I 30/55 and I 30/65, see page 78.



HWAM I 30/55  
lift-up door



HWAM I 30/55s  
side hinged door



HWAM I 30/65  
lift-up door






HWAM I 30/55

## Technical data

Capacity HWAM I 30/55/ 30/65  
 Nominal heat output HWAM I 30/55/ 30/65  
 Smoke outlet  
 Energy efficiency class HWAM I 30/55/ 30/65  
 Net efficiency HWAM I 30/55/ 30/65  
 Door  
 Door HWAM I 30/55/ 30/65  
 Door HWAM I 30/55s  
 Chimney draught, min. (recommended)  
 Width of combustion chamber HWAM I 30/55/ 30/65

4-10/6-14 kW  
 7.0/10.0 kW  
 Ø 150 mm  
  
 80.7/78.5%  
 Modern  
 Lift-up  
 Side hinged  
 12 Pa  
 55/81 cm

## Approvals & registrations

- EN 13229
  - NS 3058/3059\*
  - BlmSchV Stufe 2\*
  - LRV
  - Brændeovnsbekendtgørelsen 2018
- \* Only HWAM I 30/55



## Combustion air system







HWAM I 40/55c

## HWAM I 40/55

For more information on HWAM I 40/55, see page 80.



**Standard**  
Standard measures. This frame is integrated as standard if no customised frame is chosen.



**Without bent edges**  
3 mm thick flat frame without bent edges. Made with customised measures with or without sides.



**With bent edges**  
Frame with bent edges. Made with customised measures with or without sides.



**In-built depth of 35 cm**  
Standard measures. With this frame an in-built depth of 35 cm is achieved.



## AN INTEGRATED PART OF YOUR HOME

### HWAM I 40/55 Design by Sørig & Jacobsen

Simple elegance, clean lines and a minimalist design characterise our new insert, HWAM I 40/55. The wide glass offers a spectacular view of the dancing flames and plays a prominent role by virtue of the simple design. This model is available with a classic cast iron door or a modern glass door, and you can choose between a right hinged or a left hinged door. HWAM I 40/55 has been designed to allow for very easy servicing. The wide combustion chamber is mounted on a rotary arm, which means that the stove can easily be swivelled into the room to allow easy access to all its parts. When you buy a HWAM I 40/55 insert, you have the option of buying various types of customised frames. A frame without bent edges is both stylish and eye-catching. For more information about HWAM I 40/55, see page 80.



HWAM I 40/55m

OPTIONAL  
CUSTOMISED  
FRAME

### Technical data

Capacity	4-8 kW
Nominal heat output HWAM® Autopilot™ / HWAM® SmartControl™	6.4/6.0 kW
Smoke outlet	Ø 150 mm
Energy efficiency class HWAM® Autopilot™ / HWAM® SmartControl™	<b>A</b> / <b>A+</b>
Net efficiency HWAM® Autopilot™ / HWAM® SmartControl™	80/83%
Door	Classic or modern
Door	Right hinged or left hinged
Chimney draught, min. (recommended) HWAM® Autopilot™ / HWAM® SmartControl™	1 1/2 Pa
Width of combustion chamber	62.7 cm

### Approvals & registrations

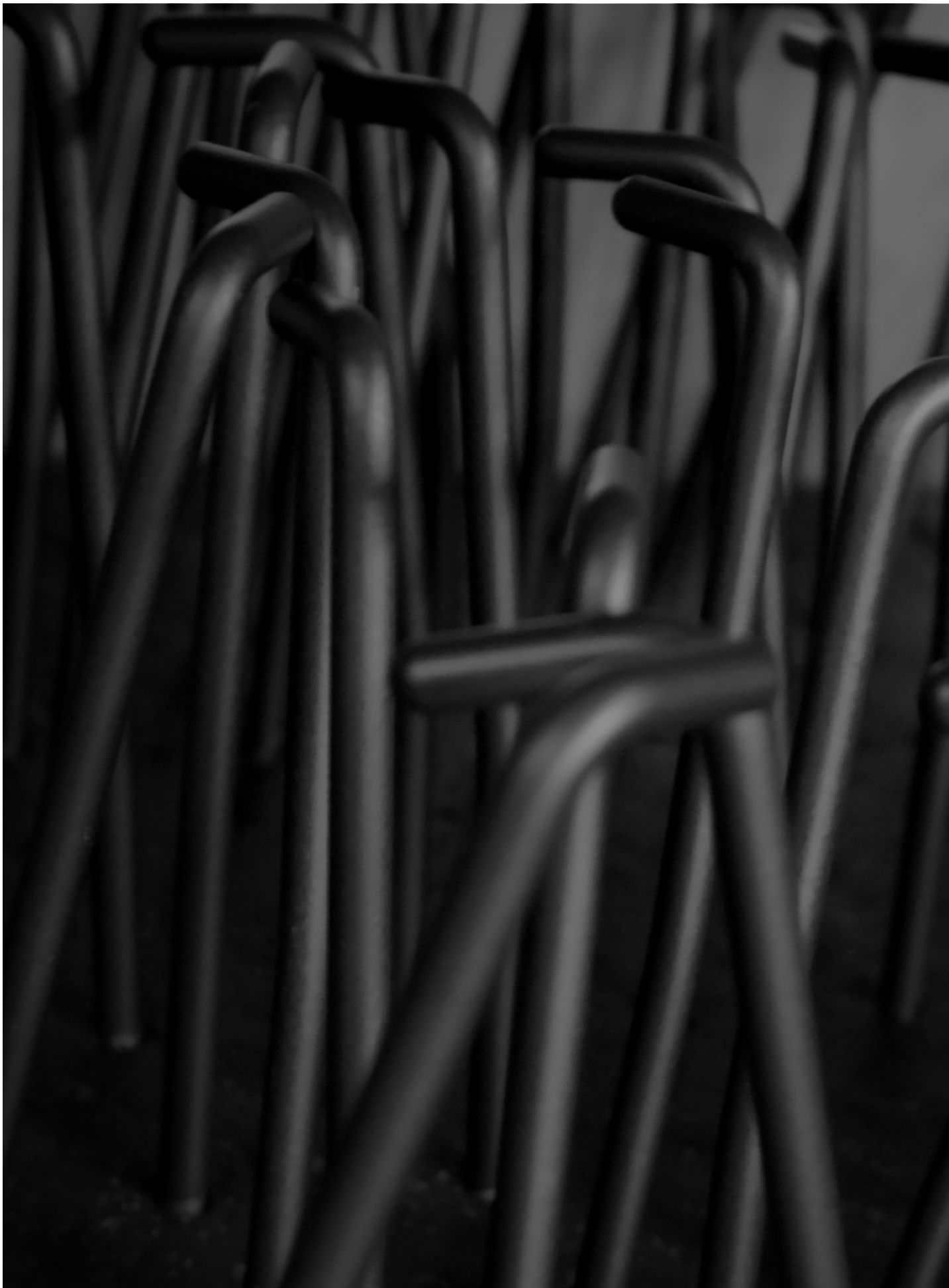
- EN 13229
- NS 3058/3059
- Art. 15a
- BlmSchV Stufe 2
- LRV
- RLU
- Brændeovnsbekendtgørelsen 2018



\* HWAM® Autopilot™: yes. HWAM® SmartControl™: pending registration

### Combustion air system









# TECHNICAL SPECIFICATIONS

54	HWAM 2600
56	HWAM 3100
58	HWAM 3500
59	HWAM 3600
62	HWAM 3700
64	HWAM 4100
67	HWAM 4200
68	HWAM 4300
69	HWAM 4500
72	HWAM 4600
74	HWAM 5530
76	HWAM 7150
77	HWAM Classic 4
78	HWAM I 30/55
79	HWAM I 30/65
80	HWAM I 40/55
81	Approvals & registrations
82	Product overview
84	Test results
86	Distance to combustible materials

# HWAM 2610/2620

## Technical data

Capacity	2-6 kW
Nominal heat output	4.5 kW
Smoke outlet	Ø 150 mm
Net efficiency	80.3%
Chimney draught, min. (recommended)	12 Pa
Energy efficiency class	A

## Weight

Weight HWAM 2610c/2610m	66/64 kg
Weight HWAM 2620c/2620m	66/64 kg
Weight pedestal	15 kg

## Measurements

Width of combustion chamber	27.0 cm
Connection from floor*, top	65.1 cm
Connection from floor on plinth, top	68.1 cm
Connection from floor on pedestal, top	95.1 cm
Connection from wall to center of top outlet, wall mounted	18.9 cm

\* From the lower edge of the stove without plinth

## Variants

Autopilot™
Classic door (c) or modern door (m)
Cast iron top, top outlet or back outlet
Pedestal, plinth or wall mounted
HWAM 2610m/2620m are available in black, grey and white
HWAM 2610c/2620c are available in black and grey

## Accessories

Combustion air system, rear/bottom
------------------------------------

## Approvals and registrations

- EN 13240
- NS 3058/3059
- BlmSchV Stufe 2
- LRV
- Brændeovnsbekendtgørelsen 2018



## Combustion air system



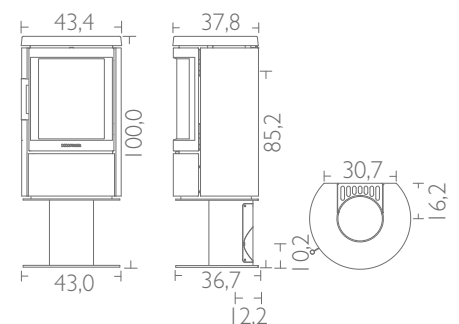
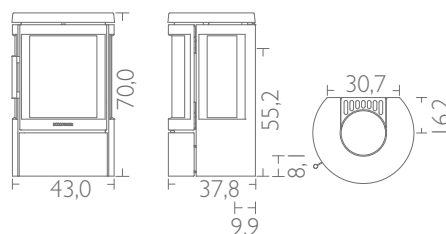
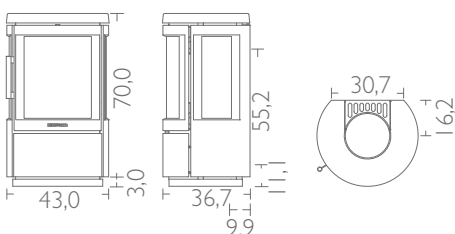
HWAM 2610c with side glass and plinth



HWAM 2610m with side glass



HWAM 2620c on pedestal





# HWAM 2630/2640

## Technical data

Capacity	2-6 kW
Nominal heat output	4.5 kW
Smoke outlet	Ø 150 mm
Net efficiency	80.3%
Chimney draught, min. (recommended)	12 Pa
Energy efficiency class	A

## Weight

Weight HWAM 2630c/2630m	75/73 kg
Weight HWAM 2640c/2640m	75/73 kg

## Measurements

Width of combustion chamber	27.0 cm
Connection from floor; top	95.1 cm

## Variants

- Autopilot™
- Classic door (c) or modern door (m)
- Cast iron top, top outlet or back outlet
- HWAM 2630m/2640m are available in black, grey and white
- HWAM 2630c//2640c are available in black and grey

## Accessories

Combustion air system, rear/bottom

## Approvals and registrations

- EN 13240
- NS 3058/3059
- BlmSchV Stufe 2
- LRV
- RLU
- Brændeovnsbekendtgørelsen 2018



## Combustion air system



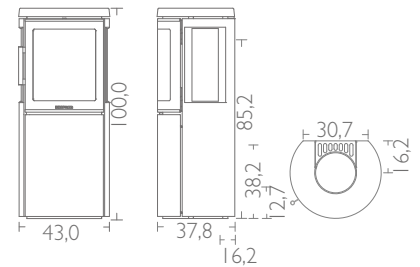
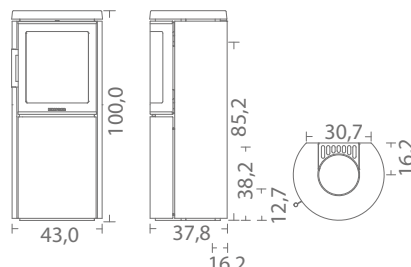
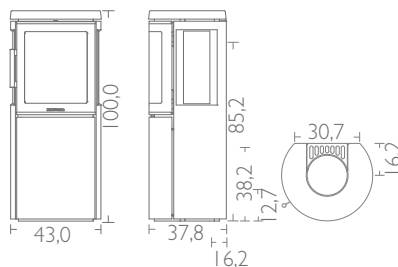
HWAM 2630c with side glass



HWAM 2640c



HWAM 2640m





# HWAM 3110

## Technical data

Capacity	2-7 kW
Nominal heat output	4.5 kW
Smoke outlet	Ø 150 mm
Net efficiency Autopilot™	78.1%
Chimney draught, min. (recommended)	12 Pa
Energy efficiency class	A

## Weight

Weight HWAM 3110c/3110m	87/84 kg
Weight pedestal	14 kg

## Measurements

Width of combustion chamber	33.0 cm
Connection from floor*, top	69.8 cm
Connection from floor on plinth, top	72.8 cm
Connection from floor on pedestal, top	99.8 cm
Connection from wall to center of top outlet, wall-mounted	20.5 cm

\* From the lower edge of the stove without plinth

## Variants

Autopilot™
Classic door (c) or modern door (m)
Cast iron top, top outlet or back outlet
Pedestal, plinth, wall bracket or corner wall bracket
HWAM 3110m is available in black, grey and white
HWAM 3110c is available in black and grey

## Accessories

Combustion air system, rear/bottom
------------------------------------

## Approvals and registrations

- EN 13240
- NS 3058/3059
- BlmSchV Stufe 2
- LRV
- Brændeovnsbekendtgørelsen 2018



## Combustion air system



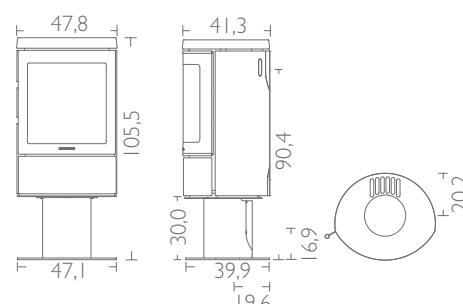
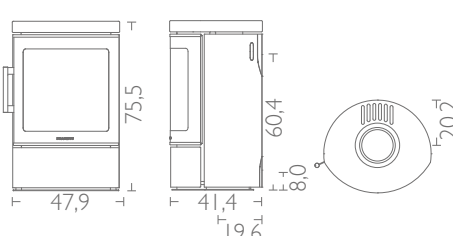
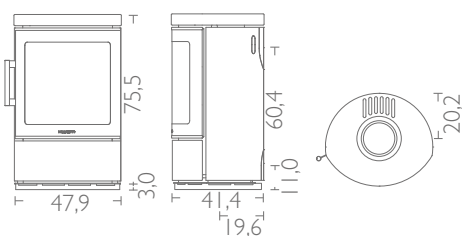
HWAM 3110c with plinth



HWAM 3110m, white



HWAM 3110m on pedestal





# HWAM 3120/3130

## Technical data

Capacity	2-7 kW
Nominal heat output	4.5 kW
Smoke outlet	Ø 150 mm
Net efficiency Autopilot™/ SmartControl™	78.1/83.4%
Chimney draught, min. (recommended)	12 Pa
Energy efficiency class Autopilot™/SmartControl™	A/A+

## Weight

Weight HWAM 3120c/3120m	107/104 kg
Weight HWAM 3130c/3130m	113/110 kg
Weight, heat storage stones	Ca. 32 kg

## Measurements

Width of combustion chamber	33.0 cm
Connection from floor with Autopilot™, top	94.8 cm
Connection from floor with SmartControl™, top	97.5 cm

\* Only HWAM® SmartControl™  
\*\* Only HWAM 3120

## Variants

Autopilot™ or SmartControl™
Classic door (c) or modern door (m)
Cast iron top, top outlet or back outlet
HWAM 3120m/3130m are available in black, grey and white
HWAM 3120c/3130c are available in black and grey

## Accessories

Combustion air system, rear/bottom
Heat storage stones (HWAM 3130)

## Approvals and registrations

- EN 13240
- NS 3058/3059
- Art. 15a \*
- BlmSchV Stufe 2
- LRV
- RLU
- Brændeovnsbekendtgørelsen 2018



## Combustion air system



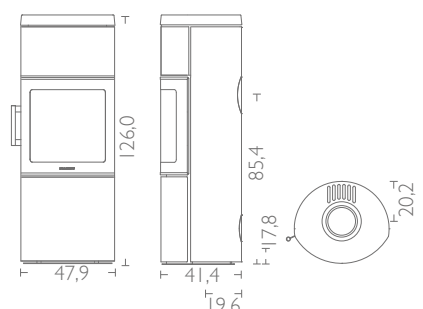
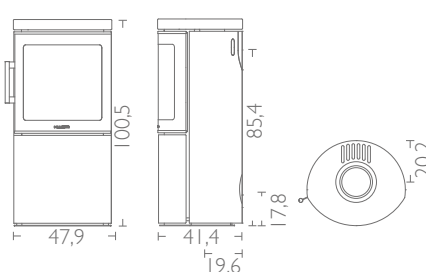
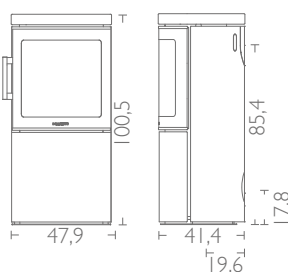
HWAM 3120c



HWAM 3120m, white



HWAM 3130m



# HWAM 3520

## Technical data

Capacity	2-7 kW
Nominal heat output	4.5 kW
Smoke outlet	Ø 150 mm
Net efficiency Autopilot™/SmartControl™	78.1/83.4%
Chimney draught, min. (recommended)	12 Pa
Energy efficiency class Autopilot™/SmartControl™	A/A+

## Weight

Weight HWAM 3520c/3520m	118/115 kg
Weight with soapstone cover HWAM 3520c/3520m	167/164 kg
Weight with natural stone cover HWAM 3520c/3520m	155/152 kg
Weight, heat storage stones	Ca. 44 kg

## Measurements

Width of combustion chamber	33.0 cm
Connection from floor with Autopilot™,top	95.0 cm
Connection from floor with SmartControl™, top	97.7 cm

\* Not HWAM® Autopilot™

## Variants

Autopilot™ or SmartControl™
Classic door (c) or modern door (m)
Cast iron top, top outlet or back outlet
Soapstone cover, top outlet or back outlet
Natural stone cover, top outlet or back outlet
HWAM 3520m is available in black, grey and white
HWAM 3520c is available in black and grey
HWAM 3520 with stone cover is available in black and grey

## Accessories

Combustion air system, rear/back
Heat storage stones

## Approvals and registrations

- EN 13240
- NS 3058/3059
- Art. 15a\*
- BlmSchV Stufe 2
- LRV
- RLU
- Brændeovnsbekendtgørelsen 2018



## Combustion air system



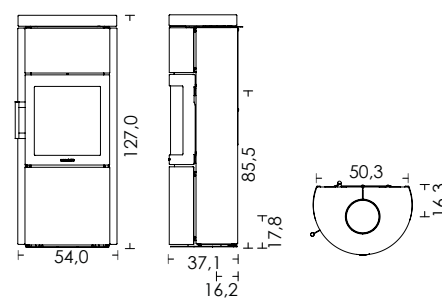
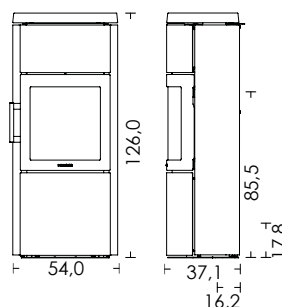
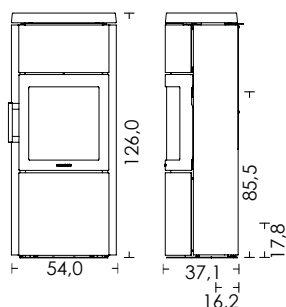
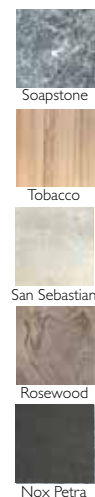
HWAM 3520c



HWAM 3520m



HWAM 3520c with soapstone cover





# HWAM 3630/3640

## Technical data

Capacity	3-9 kW
Nominal heat output	6.0 kW
Smoke outlet	Ø 150 mm
Net efficiency Autopilot™/SmartControl™	78.3/80.7%
Chimney draught, min. (recommended) Autopilot™/SmartControl™	11/12 Pa
Energy efficiency class Autopilot™/SmartControl™	A/A+

## Weight

Weight HWAM 3630c/3630m	139/136 kg
Weight HWAM 3640c/3640m	139/136 kg
Weight with soapstone cover HWAM 3640c/3640m	229/226 kg
Weight with natural stone cover HWAM 3640c/3640m	211/208 kg

## Measurements

Width of combustion chamber	35.0 cm
Connection from floor with Autopilot™, top	109.6 cm
Connection from floor with SmartControl™, top	112.3 cm

\* Not HWAM® Autopilot™

\*\* Not HWAM® SmartControl™

## Variants

Autopilot™ or SmartControl™

Classic door (c) or modern door (m)

Cast iron top, top outlet or back outlet

Soapstone cover, top outlet or back outlet (HWAM 3640)

Natural stone cover, top outlet or back outlet (HWAM 3640)

HWAM 3630m/3640m are available in black, grey and white

HWAM 3630c/3640c are available in black and grey

HWAM 3640 with stone cover is available in black and grey

## Accessories

Combustion air system, rear/bottom

## Approvals and registrations

- EN 13240
- NS 3058/3059
- Art. 15a\*
- BlmSchV Stufe 2
- LRV
- RLU
- Brændeovnsbekendtgørelsen 2018



## Combustion air system



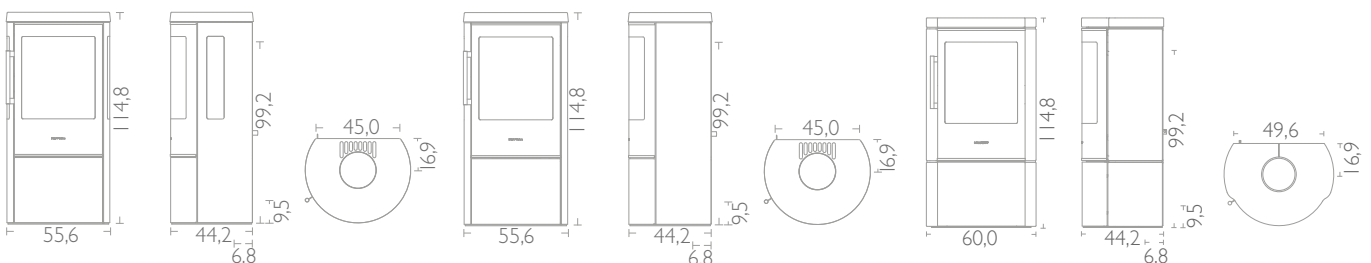
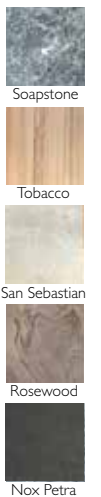
HWAM 3630c with side glass



HWAM 3640m, white



HWAM 3640c with soapstone cover



# HWAM 3650

## Technical data

Capacity	3-9 kW
Nominal heat output	6.0 kW
Smoke outlet	Ø 150 mm
Net efficiency Autopilot™/ SmartControl™	78.3/80.7%
Chimney draught, min. (recommended) Autopilot™/SmartControl™	11/12 Pa
Energy efficiency class Autopilot™/SmartControl™	A/A+

## Weight

Weight HWAM 3650c/3650m	171/168 kg
Weight, heat storage stones	Ca. 55 kg

## Measurements

Width of combustion chamber	35.0 cm
Connection from floor with Autopilot™, top	109.6 cm
Connection from floor with SmartControl™, top	112.3 cm

\* Not HWAM® Autopilot™

\*\* Not HWAM® SmartControl™

## Variants

- Autopilot™ or SmartControl™
- Classic door (c) or modern door (m)
- Cast iron top, top outlet or back outlet
- HWAM 3650m is available in black, grey and white
- HWAM 3650c is available in black and grey

## Accessories

- Combustion air system, rear/bottom
- Heat storage stones

## Approvals and registrations

- EN 13240
- NS 3058/3059
- Art. 15a\*
- BlmSchV Stufe 2
- LRV
- RLU
- Brændeovnsbekendtgørelsen 2018



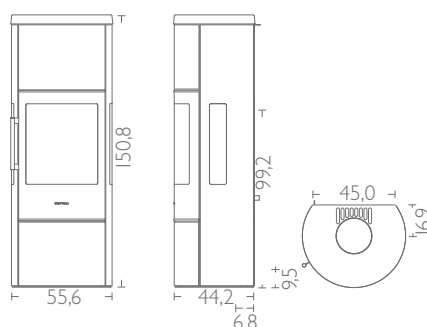
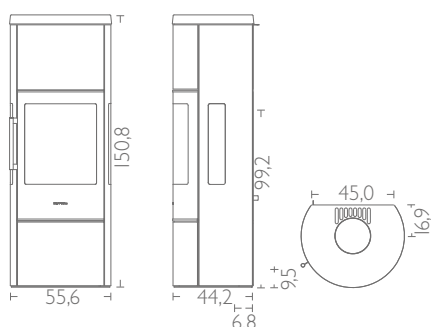
## Combustion air system



HWAM 3650c with side glass



HWAM 3650m with side glass, white





# HWAM 3660

Technical data	
Capacity	3-9 kW
Nominal heat output	6.0 kW
Smoke outlet	Ø 150 mm
Net efficiency Autopilot™/SmartControl™	78.3/80.7%
Chimney draught, min. (recommended) Autopilot™/SmartControl™	11/12 Pa
Energy efficiency class Autopilot™/SmartControl™	A/A+
Weight	
Weight HWAM 3660c/3660m	171/168 kg
Weight with soapstone cover HWAM 3660c/3660m	282/279 kg
Weight with natural stone cover HWAM 3660c/3660m	260/257 kg
Weight, heat storage stones	Ca. 55 kg
Measurements	
Width of combustion chamber	35.0 cm
Connection from floor with Autopilot™, top	109.6 cm
Connection from floor with SmartControl™, top	112.3 cm

\* Not HWAM® Autopilot™  
\*\* Not HWAM® SmartControl™

Variants	
Autopilot™ or SmartControl™	
Classic door (c) or modern door (m)	
Cast iron top, top outlet or back outlet	
Soapstone cover, top outlet or back outlet	
Natural stone cover, top outlet or back outlet	
HWAM 3660m is available in black, grey and white	
HWAM 3660c is available in black and grey	
HWAM 3660 with stone cover is available in black and grey	
Accessories	
Combustion air system, rear/bottom	
Heat storage stones	

Approvals and registrations	
<ul style="list-style-type: none"> <li>• EN 13240</li> <li>• NS 3058/3059</li> <li>• Art. 15a*</li> <li>• BlmSchV Stufe 2</li> <li>• LRV</li> <li>• RLU</li> <li>• Brændeovnsbekendtgørelsen 2018</li> </ul>	

Combustion air system	



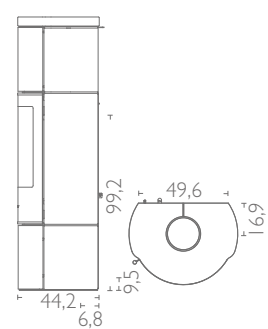
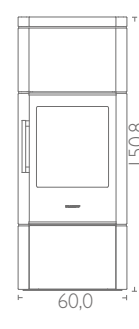
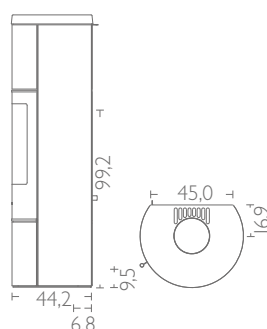
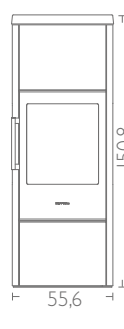
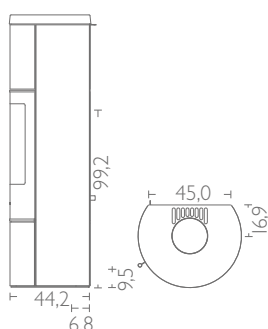
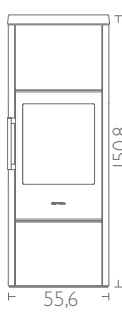
HWAM 3660c



HWAM 3660m, white



HWAM 3660m with soapstone cover





# HWAM 3740

## Technical data

Capacity	2-7 kW
Nominal heat output	4.5 kW
Smoke outlet	Ø 150 mm
Net efficiency Autopilot™/ SmartControl™	78.1/82.9%
Chimney draught, min. (recommended)	12 Pa
Energy efficiency class Autopilot™/SmartControl™	A/A+

## Weight

Weight HWAM 3740c/3740m	104/101 kg
-------------------------	------------

## Measurements

Width of combustion chamber	33.0 cm
Connection from floor with Autopilot™, top	94.8 cm
Connection from floor with SmartControl™, top	97.5 cm

\* Not HWAM® Autopilot™  
 \*\* Pending registration

## Variants

- Autopilot™ or SmartControl™
  - Classic door (c) or modern door (m)
  - Open or closed top (top outlet or back outlet)
  - Traditional handle (stainless steel) or style handle (stainless steel or black)
- HWAM 3740c/3740m are available in black and grey

## Accessories

Combustion air system, rear/bottom

## Approvals and registrations

- EN 13240
- NS 3058/3059\*\*
- Art. 15a\*
- BlmSchV Stufe 2
- LRV\*\*
- Brændeovnsbekendtgørelsen 2018



## Combustion air system



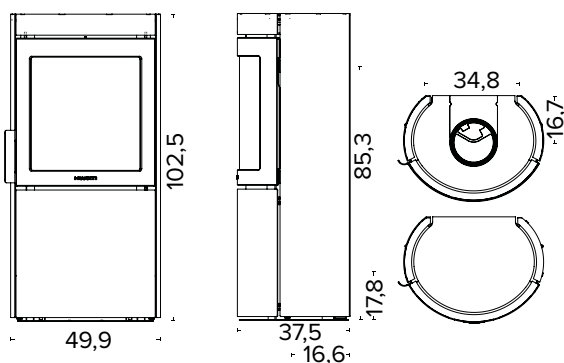
HWAM 3740c with traditional handle



HWAM 3740c with style handle (stainless steel)



HWAM 3740m with style handle (black)



All drawings: The measurements for the flue outlet and fresh air connection are to the centre of the hole.



# HWAM 3760

Technical data	
Capacity	2-7 kW
Nominal heat output	4.5 kW
Smoke outlet	Ø 150 mm
Net efficiency Autopilot™/ SmartControl™	78.1/82.9%
Chimney draught, min. (recommended)	12 Pa
Energy efficiency class Autopilot™/SmartControl™	A/A+
Weight	
Weight HWAM 3760c/3760m	117/113 kg
Weight heat storing stones	Ca. 32 kg
Measurements	
Width of combustion chamber	33.0 cm
Connection from floor with Autopilot™, top	94.8 cm
Connection from floor with SmartControl™, top	97.5 cm

\* Not HWAM® Autopilot™  
\*\* Pending registration

## Variants

Autopilot™ or SmartControl™
Classic door (c) or modern door (m)
Open or closed top (top outlet or back outlet)
Traditional handle (stainless steel) or style handle (stainless steel or black)
HWAM 3740c/3740m are available in black and grey

## Accessories

Combustion air system, rear/bottom
Heat storage stones

## Approvals and registrations

- EN 13240
- NS 3058/3059\*\*
- Art. 15a\*
- BlmSchV Stufe 2
- LRV\*\*
- Brændeovnsbekendtgørelsen 2018



## Combustion air system



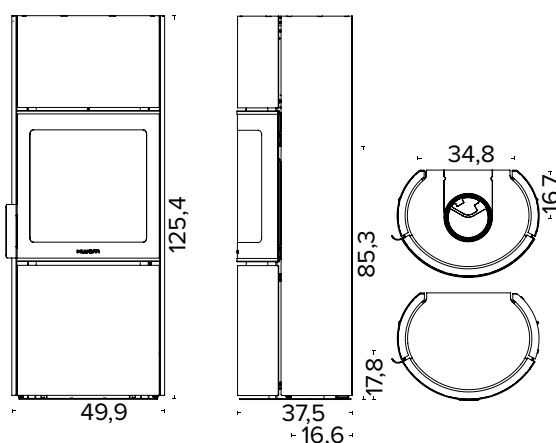
HWAM 3760m with traditional handle



HWAM 3760c with style handle (stainless steel), grey



HWAM 3760c with style handle (black)



All drawings: The measurements for the flue outlet and fresh air connection are to the centre of the hole.

# HWAM 4110/4120

## Technical data

Capacity	2-7 kW
Nominal heat output Autopilot™/ SmartControl™	4.7/4.9 kW
Smoke outlet	Ø 150 mm
Net efficiency Autopilot™/ SmartControl™	82/86%
Chimney draught, min. (recommended)	12 Pa
Energy efficiency class Autopilot™/SmartControl™	A+/A+

## Weight

Weight HWAM 4110/4120	142/140 kg
-----------------------	------------

## Measurements

Width of combustion chamber	28.4-35.8 cm
Connection from floor; top	95.9 cm

\* Pending registration

## Variants

Autopilot™ or SmartControl™

Open or closed top (top outlet or back outlet)

Left hinged door

HWAM 4110/4120 are available in black and grey

## Accessories

Combustion air system, rear/bottom

## Approvals and registrations

- EN 13240
- NS 3058/3059
- Art. 15a
- BImSchV Stufe 2
- LRV
- Brændeovnsbekendtgørelsen 2018



## Combustion air system



HWAM 4110 with side glass



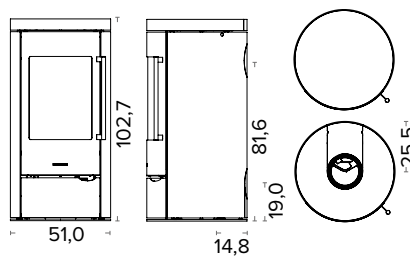
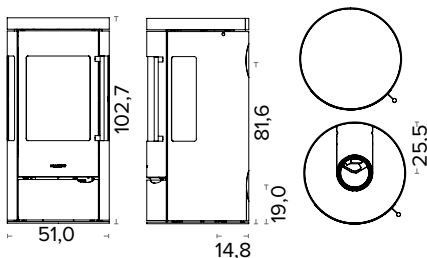
HWAM 4120, grey



Closed top (back outlet)



Open top (top outlet)





# HWAM 4130/4140

Technical data	
Capacity	2-7 kW
Nominal heat output Autopilot™/ SmartControl™	4.7/4.9 kW
Smoke outlet	Ø 150 mm
Net efficiency Autopilot™/ SmartControl™	82/86%
Chimney draught, min. (recommended)	12 Pa
Energy efficiency class Autopilot™/SmartControl™	A+/A+
Weight	
Weight HWAM 4130/4140	158/156 kg
Measurements	
Width of combustion chamber	28.4-35.8 cm
Connection from floor, top	112.6 cm

\* Pending registration

Variants	
Autopilot™ or SmartControl™	
Open or closed top (top outlet or back outlet)	
Left hinged door	
HWAM 4130/4140 are available in black and grey	

Accessories	
Combustion air system, rear/bottom	

### Approvals and registrations

- EN 13240
- NS 3058/3059
- Art. 15a
- BlmSchV Stufe 2
- LRV
- Brändeovnsbekendtgørelsen 2018



### Combustion air system



HWAM 4130 with side glass



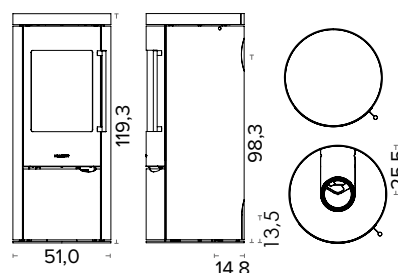
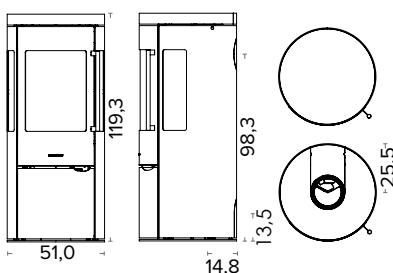
HWAM 4140, grey



Closed top (back outlet)



Open top (top outlet)



# HWAM 4150/4160

## Technical data

Capacity	2-7 kW
Nominal heat output Autopilot™/ SmartControl™	4.7/4.9 kW
Smoke outlet	Ø 150 mm
Net efficiency Autopilot™/ SmartControl™	82/86%
Chimney draught, min. (recommended)	12 Pa
Energy efficiency class Autopilot™/SmartControl™	A+/A+

## Weight

Weight HWAM 4150/4160	171/169 kg
Weight, heat storage stones	Ca. 30, 60 or 90 kg

## Measurements

Width of combustion chamber	28.4-35.8 cm
Connection from floor; top	112.6 cm

\* Pending registration

## Variants

- Autopilot™ or SmartControl™
- Open or closed top (top outlet or back outlet)
- Left hinged door
- HWAM 4150/4160 are available in black and grey

## Accessories

- Combustion air system, rear/bottom
- Heat storage stones

## Approvals and registrations

- EN 13240
- NS 3058/3059
- Art. 15a
- BlmSchV Stufe 2
- LRV
- Brændeovnsbekendtgørelsen 2018



## Combustion air system



HWAM 4150 with side glass



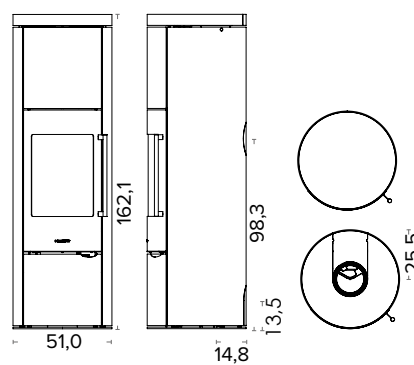
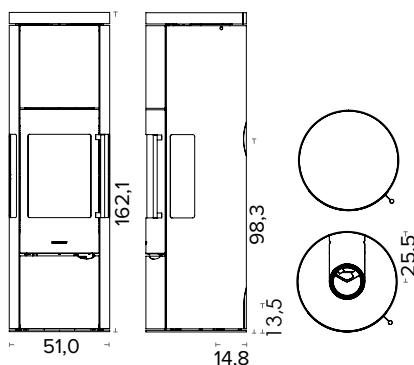
HWAM 4160, grey



Closed top (back outlet)



Open top (top outlet)



# HWAM 4240

Technical data	
Capacity	2-7 kW
Nominal heat output Autopilot™/ SmartControl™	4.7/4.9 kW
Smoke outlet	Ø 150 mm
Net efficiency Autopilot™/ SmartControl™	82/86%
Chimney draught, min. (recommended)	12 Pa
Energy efficiency class Autopilot™/SmartControl™	A+/A+
Weight	
Weight	135 kg
Weight with soapstone cover	215 kg
Weight with natural stone cover	215 kg
Measurements	
Width of combustion chamber	28.4-35.8 cm
Connection from floor, top	107.7 cm

\* Pending registration

Variants
Autopilot™ or SmartControl™
Steel top, top outlet or back outlet
Soapstone cover, top outlet or back outlet
Natural stone cover, top outlet or back outlet
Left hinged door
HWAM 4240 is available in black and grey
HWAM 4240 with stone cover is available in black and grey

Accessories
Combustion air system, rear/bottom

Approvals and registrations	
<ul style="list-style-type: none"> <li>EN 13240</li> <li>NS 3058/3059</li> <li>Art. 15a</li> <li>BlmSchV Stufe 2</li> <li>LRV</li> <li>Brandeovnsbekendtgørelsen 2018</li> </ul>	

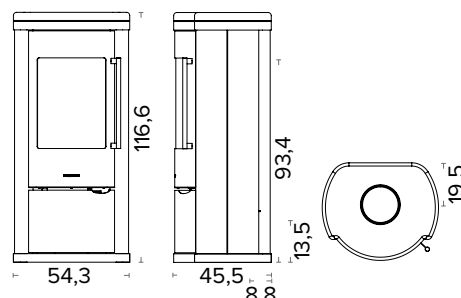
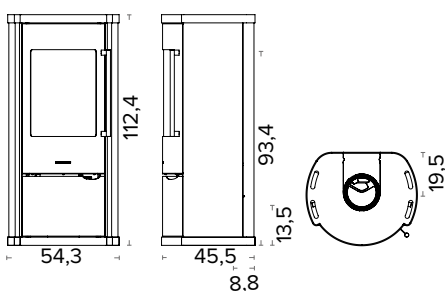
Combustion air system



HWAM 4240



HWAM 4240 with soapstone cover





# HWAM 4340

## Technical data

Capacity	3-8 kW
Nominal heat output	6.0 kW
Smoke outlet	Ø 150 mm
Net efficiency Autopilot™/ SmartControl™	80/82%
Chimney draught, min. (recommended)	12 Pa
Energy efficiency class Autopilot™/SmartControl™	A/A+

## Weight

Weight	140 kg
Weight with soapstone cover	227 kg
Weight with natural stone cover	227 kg

## Measurements

Width of combustion chamber	38.2 cm
Connection from floor; top	115.1 cm

\* Pending registration

## Variants

- Autopilot™ or SmartControl™
- Steel top, top outlet or back outlet
- Soapstone cover, top outlet or back outlet
- Natural stone cover, top outlet or back outlet
- Left hinged door
- HWAM 4340 is available in black and grey
- HWAM 4340 with stone cover is available in black and grey

## Accessories

Combustion air system, rear/bottom

## Approvals and registrations

- EN 13240
- NS 3058/3059
- Art. 15a
- BImSchV Stufe 2
- LRV
- Brändeovnsbekendtgørelsen 2018



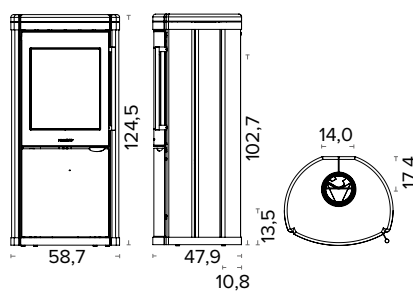
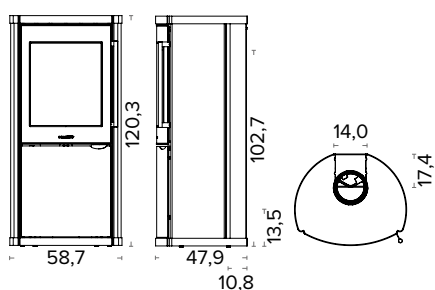
## Combustion air system



HWAM 4340



HWAM 4340 with natural stone cover, Rosewood





# HWAM 4510/4520

## Technical data

Capacity	3-7 kW
Nominal heat output	4.9 kW
Smoke outlet	Ø 150 mm
Net efficiency Autopilot™/ SmartControl™	82/81%
Chimney draught, min. (recommended)	12 Pa
Energy efficiency class Autopilot™/SmartControl™	A+/A+

## Weight

Weight HWAM 4510c/4510m	101/99 kg
Weight HWAM 4520c/4520m	96/94 kg
Weight with low base HWAM 4510c/4510m	103/101 kg
Weight with low base HWAM 4520c/4520m	98/86 kg
Weight with low plinth HWAM 4510c/4510m	105/103 kg
Weight with low plinth HWAM 4520c/4520m	100/98 kg
Weight with high plinth HWAM 4510c/4510m	109/107 kg
Weight with high plinth HWAM 4520c/4520m	104/102 kg

## Measurements

Width of combustion chamber	35.8 cm
Connection from floor without plinth, top, Autopilot™*	72.3 cm
Connection from floor without plinth, top, SmartControl™*	77.8 cm
Connection from floor low base, top	77.8 cm
Connection from floor low plinth, top	89.8 cm
Connection from floor high plinth, top	100.8 cm
Connection from wall to center of top outlet, wall mounted	21.3 cm

\* From the lower edge of the stove.

**NB:** Do not place low models of HWAM 4510/4520 on a flammable floor. Ask your local retailer for advise if in doubt.

## Variants

Autopilot™ or SmartControl™ (only wall mounted or with a plinth)

Classic door (c) or modern door (m)

Cast iron top, top outlet or back outlet

Floor model, low base, low plinth, high plinth or wall mounted

HWAM 4510m/4520m are available in black, grey and white

HWAM 4510c/4520c are available in black and grey

## Accessories

Combustion air system, rear/bottom

## Approvals and registrations

- EN 13240
- NS 3058/3059
- Art. 15a
- BlmSchV Stufe 2
- LRV
- RLU
- Brændeovnsbekendtgørelsen 2018



## Combustion air system



HWAM 4520c  
HWAM® Autopilot™



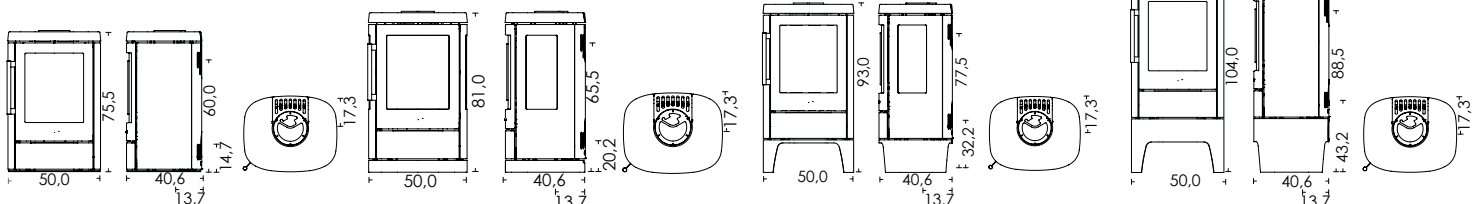
HWAM 4510c  
with low base  
HWAM® Autopilot™



HWAM 4510c  
with low plinth  
HWAM® Autopilot™



HWAM 4520m  
with high plinth



# HWAM 4530/4540

## Technical data

Capacity	3-7 kW
Nominal heat output	49 kW
Smoke outlet	Ø 150 mm
Net efficiency Autopilot™/ SmartControl™	82/81%
Chimney draught, min. (recommended)	12 Pa
Energy efficiency class Autopilot™/SmartControl™	A+/A+

## Weight

Weight HWAM 4530c/4530m	124/122 kg
Weight HWAM 4540c/4540m	119/117 kg
Weight with soapstone cover HWAM 4540c/4540m	175/173 kg
Weight with natural stone cover HWAM 4540c/4540m	136/134 kg

## Measurements

Width of combustion chamber	35.8 cm
Connection from floor; top	111.4 cm

\* Only HWAM 4540

## Variants

- Autopilot™ or SmartControl™
- Classic door (c) or modern door (m)
- Cast iron top, top outlet or back outlet
- Soapstone cover; top outlet or back outlet (HWAM 4540)
- Natural stone cover; top outlet or back outlet (HWAM 4540)
- HWAM 4530m/4540m are available in black, grey and white
- HWAM 4530c/4540c are available in black and grey
- HWAM 4540 with stone cover is available in black and grey

## Accessories

- Combustion air system, rear/bottom

## Approvals and registrations

- EN 13240
- NS 3058/3059
- Art. 15a
- BlmSchV Stufe 2
- LRV
- RLU
- Brændeovnsbekendtgørelsen 2018



## Combustion air system



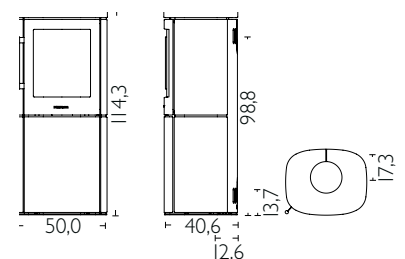
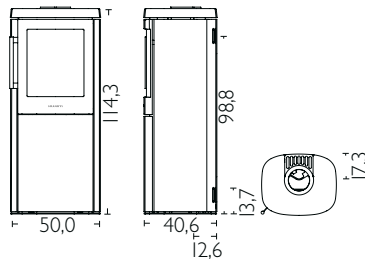
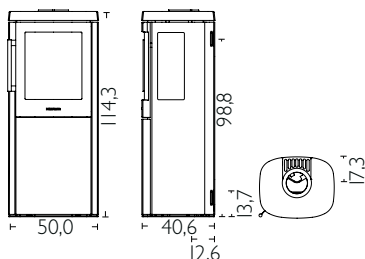
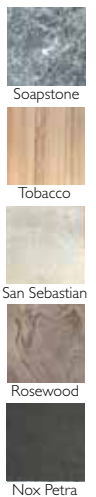
HWAM 4530c with side glass



HWAM 4540m



HWAM 4540c with soapstone cover







# HWAM 4550/4560

## Technical data

Capacity	3-7 kW
Nominal heat output	4.9 kW
Smoke outlet	Ø 150 mm
Net efficiency Autopilot™/SmartControl™	82/81%
Chimney draught, min. (recommended)	12 Pa
Energy efficiency class Autopilot™/SmartControl™	A+/A+

## Weight

Weight HWAM 4550c/4550m	134/132 kg
Weight HWAM 4560c/4560m	129/127 kg
Weight with soapstone cover HWAM 4560c/4560m	201/199 kg
Weight with natural stone cover HWAM 4560c/4560m	156/154 kg
Weight, heat storage stones	Ca. 29 kg

## Measurements

Width of combustion chamber	35.8 cm
Connection from floor, top	111.4 cm

\* Only HWAM 4560

## Variants

- Autopilot™ or SmartControl™
- Classic door (c) or modern door (m)
- Cast iron top, top outlet or back outlet
- Soapstone cover; top outlet or back outlet (HWAM 4560)
- Natural stone cover; top outlet or back outlet (HWAM 4560)
- HWAM 4550m/4560m are available in black, grey and white
- HWAM 4550c/4560c are available in black and grey
- HWAM 4560 with stone cover is available in black and grey

## Accessories

- Combustion air system, rear/bottom
- Heat storage stones

## Approvals and registrations

- EN 13240
- NS 3058/3059
- Art. 15a
- BlmSchV Stufe 2
- LRV
- RLU
- Brændeovnsbekendtgørelsen 2018



## Combustion air system



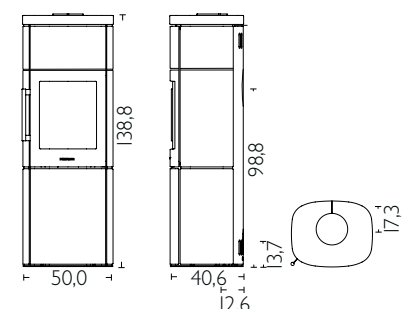
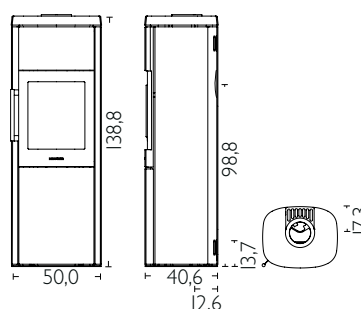
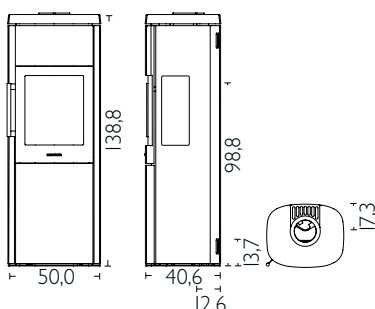
HWAM 4550m with side glass



HWAM 4560c



HWAM 4560m with soapstone cover



# HWAM 4620/4640

## Technical data

Capacity	3-9 kW
Nominal heat output Autopilot™/SmartControl™	7.0/8.0 kW
Smoke outlet	Ø 150 mm
Net efficiency Autopilot™/ SmartControl™	80/81%
Chimney draught, min. (recommended)	12 Pa
Energy efficiency class Autopilot™/SmartControl™	A/A+

## Weight

Weight HWAM 4620c/4620m	119/117 kg
Weight HWAM 4640c/4640m	133/131 kg
Weight with soapstone cover HWAM 4640c/4640m	197/195 kg
Weight with natural stone cover HWAM 4640c/4640m	182/180 kg

## Measurements

Width of combustion chamber	49.0 cm
Connection from floor; top, HWAM 4620	81.9 cm
Connection from floor; top, HWAM 4640	111.4 cm

\* Not HWAM® SmartControl™

\*\* Not HWAM 4620

## Variants

Autopilot™ (HWAM 4620/4640) or SmartControl™ (HWAM 4640)

Classic door (c) or modern door (m)

Cast iron top, top outlet or back outlet

Soapstone cover; top outlet or back outlet (HWAM 4640)

Natural stone cover; top outlet or back outlet (HWAM 4640)

HWAM 4620m/4640m are available in black, grey and white

HWAM 4620c/4640c are available in black and grey

HWAM 4640 with stone cover is available in black and grey

## Accessories

Combustion air system, rear/bottom

## Approvals and registrations

- EN 13240
- NS 3058/3059
- Art. 15a
- BlmSchV Stufe 2
- LRV
- RLU
- Brændeovnsbekendtgørelsen 2018



## Combustion air system



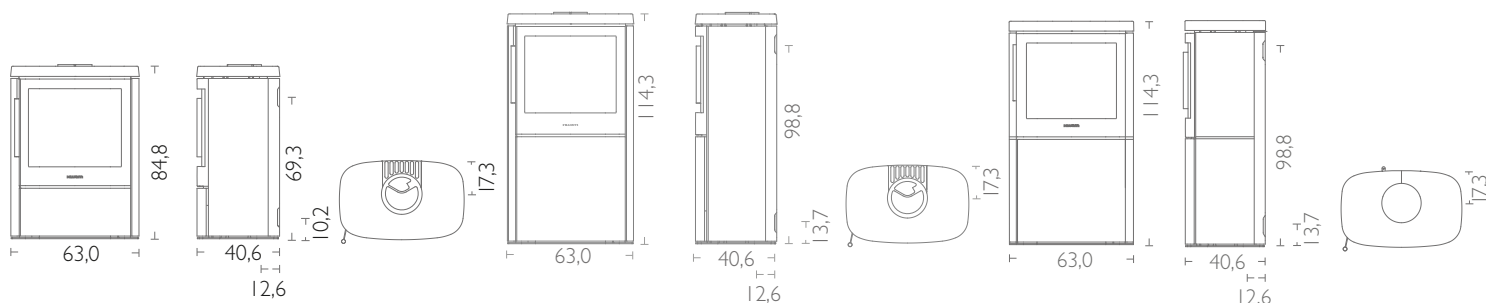
HWAM 4620c



HWAM 4640m



HWAM 4640m with soapstone cover





# HWAM 4660

## Technical data

Capacity	3-9 kW
Nominal heat output Autopilot™/SmartControl™	7.0/8.0 kW
Smoke outlet	Ø 150 mm
Net efficiency Autopilot™/ SmartControl™	80/81%
Chimney draught, min. (recommended)	12 Pa
Energy efficiency class Autopilot™/SmartControl™	A/A+

## Weight

Weight HWAM 4660c/4660m	153/151 kg
Weight with soapstone cover HWAM 4660c/4660m	224/222 kg
Weight with natural stone cover HWAM 4660c/4660m	209/207 kg
Weight, heat storage stones	Ca. 45 kg

## Measurements

Width of combustion chamber	49.0 cm
Connection from floor; top	111.4 cm

\* Not HWAM® SmartControl™

## Variants

- Autopilot™ or SmartControl™
- Classic door (c) or modern door (m)
- Cast iron top, top outlet or back outlet
- Soapstone cover, top outlet or back outlet
- Natural stone cover, top outlet or back outlet
- HWAM 4660m is available in black, grey and white
- HWAM 4660c is available in black and grey
- HWAM 4660 with stone cover is available in black and grey

## Accessories

- Combustion air system, rear/bottom
- Heat storing stone

## Approvals and registrations

- EN 13240
- NS 3058/3059
- Art. 15a
- BImSchV Stufe 2
- LVR
- RLU
- Brændeovnsbekendtgørelsen 2018



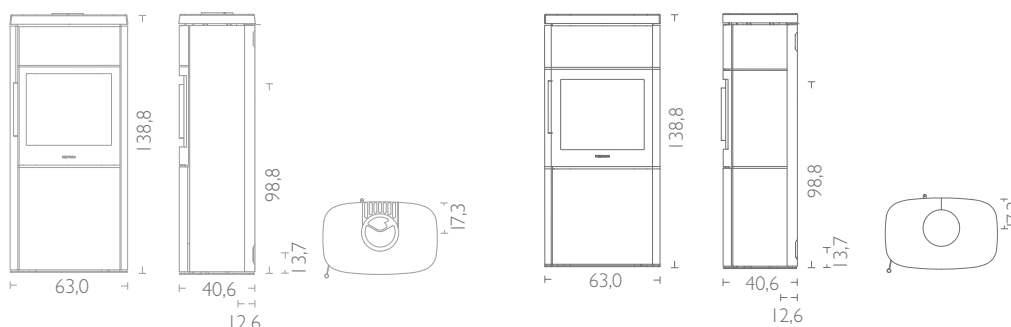
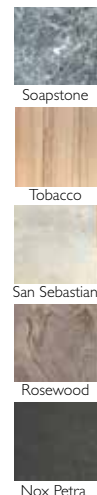
## Combustion air system



HWAM 4660c



HWAM 4660m with Tobacco sandstone cover



All drawings: The measurements for the flue outlet and fresh air connection are to the centre of the hole.



# HWAM 5530

## Technical data

Capacity	4-8 kW
Nominal heat output Autopilot™/SmartControl™	6.4/6.0 kW
Smoke outlet	Ø 150 mm
Net efficiency Autopilot™/ SmartControl™	80/83%
Chimney draught, min. (recommended) Autopilot™/ SmartControl™	11/12 Pa
Energy efficiency class Autopilot™/SmartControl™	A/A+

## Weight

Weight HWAM 5530c/5530m	247/245 kg
Weight tall bookcase	56 kg
Weight narrow module without/with drawer	25/37 kg
Weight wide module without/with drawer	45/55 kg
Weight heat storage stones	Ca. 137 kg

## Measurements

Width of combustion chamber	44.3-62.7 cm
Connection from floor; top,	160.0 cm

\* Pending registration

## Variants

- Autopilot™ or SmartControl™
- Classic door (c) or modern door (m)
- Optional right or left hinged door
- Steel top, top outlet or back outlet
- HWAM 5530c/5530m are available in black

## Accessories

- Tall bookcase
- Narrow module without/with drawer (front in oak/walnut) incl. felt cushion
- Wide module without/with drawer (front in oak/walnut) incl. felt cushion
- Heat storage stones
- Combustion air system, rear/bottom

## Approvals and registrations

- EN 13240
- NS 3058/3059
- Art. 15a
- BlmSchV Stufe 2
- LRV
- RLU
- Brændeovnsbekendtgørelsen 2018



## Combustion air system



HWAM 5530c with right hinged door



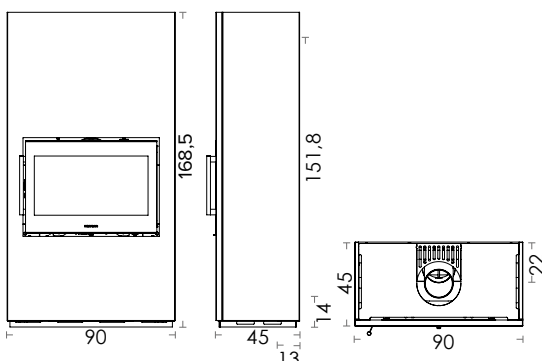
HWAM 5530m with right hinged door



Right hinged door

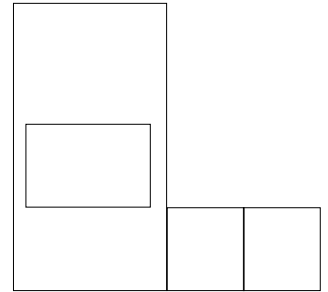
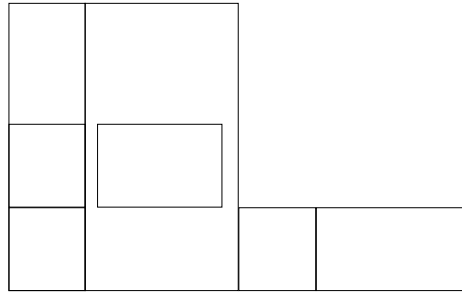
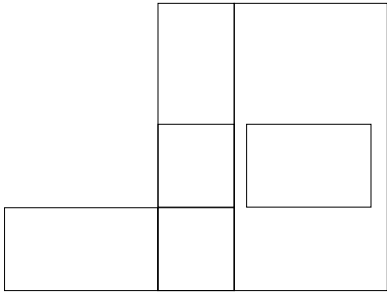


Left hinged door



# HWAM 5530

## Setting Examples



Tall bookcase



Narrow module without drawer



Narrow module with drawer, oak front



Narrow module with drawer, walnut front



Felt cushion for narrow module



Wide module without drawer



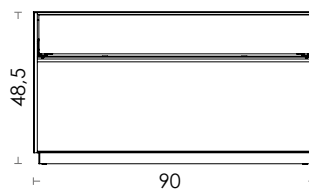
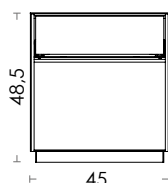
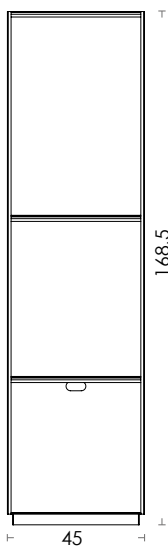
Wide module with drawer, oak front



Wide module with drawer, walnut front



Felt cushion for wide module



# HWAM 7150

## Technical data

Capacity	2-7 kW
Nominal heat output	4.5 kW
Smoke outlet	Ø 150 mm
Net efficiency Autopilot™/SmartControl™	80.9/80.5%
Chimney draught, min. (recommended)	12 Pa
Energy efficiency class Autopilot™/SmartControl™	A+/A+

## Weight

Weight with soapstone cover HWAM 7150c/7150m	462/459 kg
Weight, heat storage stones HWAM 7150	Ca. 50 kg

## Measurements

Width of combustion chamber	33.0 cm
Connection from floor; top	138.1 cm

## Variants

Autopilot™ or SmartControl™

Classic door (c) or modern door (m)

HWAM 7150 with soapstone is available in black

## Accessories

Combustion air system, rear/bottom

Heat storage stones

## Approvals and registrations

- EN 13240
- NS 3058/3059
- Art. 15a
- BImSchV Stufe 2
- LRV
- RLU
- Brændeovnsbekendtgørelsen 2018

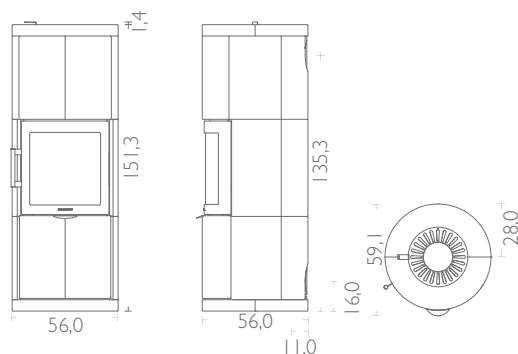


## Combustion air system



Soapstone

HWAM 7150c with soapstone cover





# HWAM Classic 4

Technical data	
Capacity	3-8 kW
Nominal heat output	8 kW
Smoke outlet	Ø 150 mm
Net efficiency	79,3%
Chimney draught, min. (recommended)	12 Pa
Energy efficiency class	A
Weight	
Weight	108 kg
Weight with plinth	120 kg
Weight with baking oven	178 kg
Weight with plinth and baking oven	190 kg
Measurements	
Width of combustion chamber	40.0 cm
Baking oven, H x W x D	22.5 x 46.6 x 23.7 cm
Connection from floor; top	68.7 cm
Connection from floor with plinth, top	90.7 cm
Connection from floor with baking oven, top	108.5 cm
Connection from floor with plinth and baking oven, top	130.5 cm

## Variants

- Autopilot™
- Top outlet or back outlet (not with baking oven)
- Plinth
- Baking oven
- HWAM Classic 4 is available in black and grey

## Accessories

- Combustion air system, rear

## Approvals and registrations

- EN 13240
- BlmSchV Stufe 2
- LRV



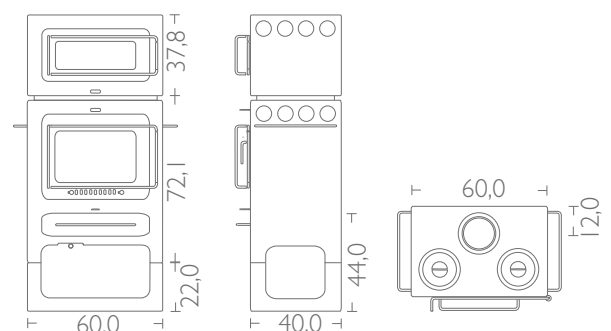
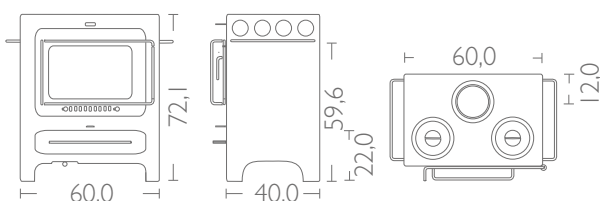
## Combustion air system



HWAM Classic 4



HWAM Classic 4 with plinth and baking oven



# HWAM I 30/55

## Technical data

Capacity	4-10 kW
Nominal heat output	7.0 kW
Smoke outlet	Ø150 mm
Net efficiency	80.7%
Chimney draught, min. (recommended)	12 Pa
Energy efficiency class	A+

## Weight

Weight HWAM I 30/55	98 kg
Weight HWAM I 30/55s	92 kg

## Measurements

Width of combustion chamber	55.0 cm
-----------------------------	---------

## Variants

Autopilot™

Lift-up door (HWAM I 30/55) or side hinged door (HWAM I 30/55s)

Top outlet or back outlet

## Accessories

Combustion air system, rear/bottom

## Approvals and registrations

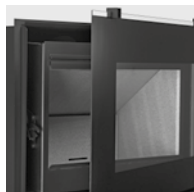
- EN 13229
- NS 3058/3059
- BImSchV Stufe 2
- LRV
- Brandeovnsbekendtgørelsen 2018



## Combustion air system



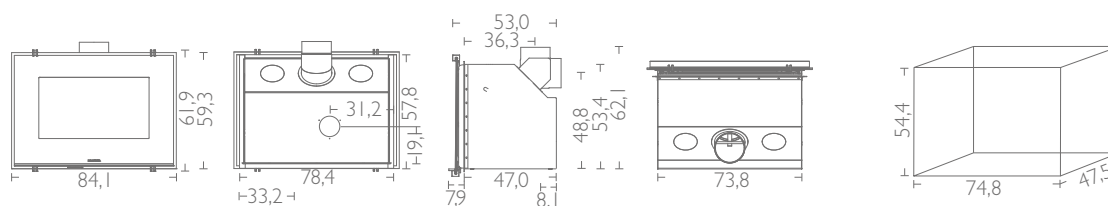
HWAM I 30/55



HWAM I 30/55s



HWAM I 30/55s



# HWAM I 30/65

Technical data	
Capacity	6-14 kW
Nominal heat output	10 kW
Smoke outlet	Ø150 mm
Net efficiency	78.5%
Chimney draught, min. (recommended)	12 Pa
Energy efficiency class	A
Weight	
Weight	126 kg
Measurements	
Width of combustion chamber	81.0 cm

## Variants

- Autopilot™
- Lift-up door
- Top outlet or back outlet

## Accessories

- Combustion air system, rear

## Approvals and registrations

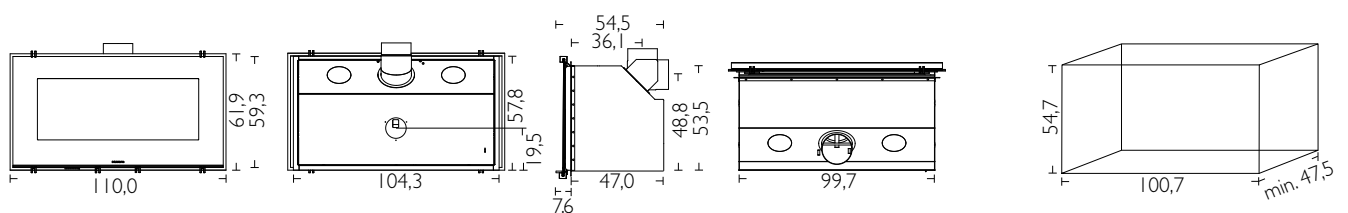
- EN 13229
- LRV
- Brændeovnsbekendtgørelsen 2018



## Combustion air system



HWAM I 30/65



# HWAM I 40/55

## Technical data

Capacity	4-8 kW
Nominal heat output Autopilot™ / SmartControl™	6.4/6.0 kW
Smoke outlet	Ø150 mm
Net efficiency Autopilot™ / SmartControl™	80/83%
Chimney draught, min. (recommended) Autopilot™ / SmartControl™	11/12 Pa
Energy efficiency class Autopilot™ / SmartControl™	A+/A+

## Weight

Weight HWAM I 40/55c / I 40/55m	97/99 kg
---------------------------------	----------

## Measurements

Width of combustion chamber	62.7 cm
-----------------------------	---------

\* HWAM® Autopilot™: Yes. HWAM® SmartControl™: Pending registration.

## Variants

- Autopilot™ or SmartControl™
- Classic (c) or modern (m) door
- Optional right or left hinged door
- Top outlet or back outlet
- HWAM I 40/55 is available in black

## Accessories

- Combustion air system
- Fan kit
- Customised frame

## Approvals and registrations

- EN 13229
- NS 3058/3059
- BlmSchV Stufe 2
- LRV
- RLU
- Brændeovnsbekendtgørelsen 2018



## Combustion air system

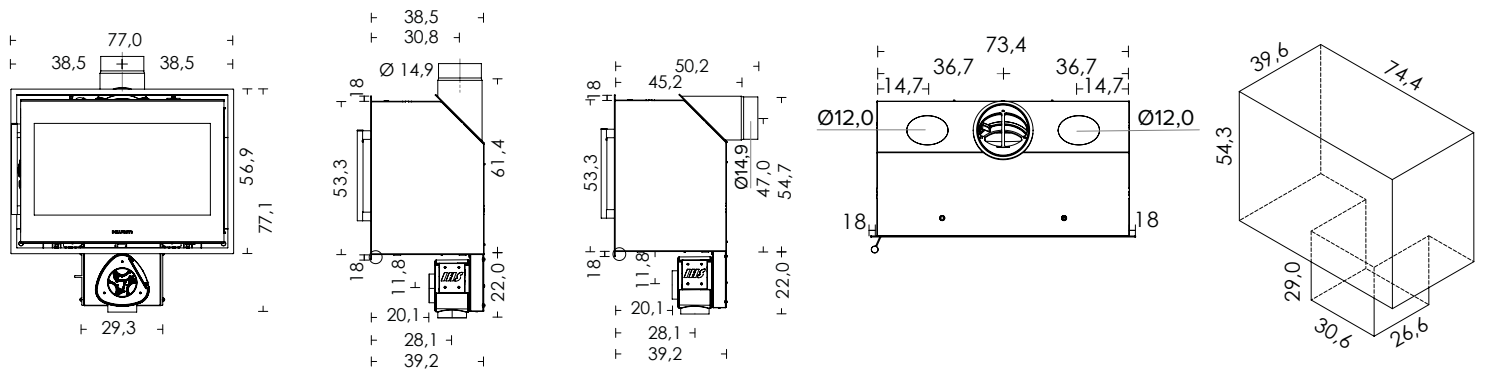


HWAM I 40/55m right hinged door

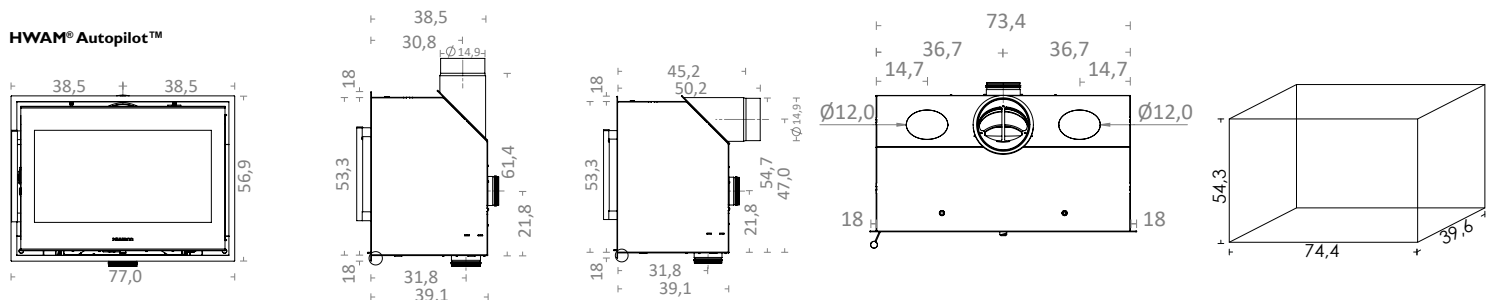


HWAM I 40/55c left hinged door

### HWAM® SmartControl™



### HWAM® Autopilot™







# Approvals & registrations



	EN 13229 (Europa)	EN 13240 (Europa)	Art. 15a (Austria)	NS 3058/3059 (Norway)	Brændeovnsbekendtgørelsen 2018 (Denmark)	LRV (Switzerland)	BimSchV Stufe 2 (Germany)	RLU zugelassen (Germany)	DEFRA exempt (UK)	HETAS (UK)	Flamme Verte (France)
HWAM 2610		x		x	x	x	x		x	x	x
HWAM 2620		x		x	x	x	x		x	x	x
HWAM 2630		x		x	x	x	x	x	x	x	x
HWAM 2640		x		x	x	x	x	x	x	x	x
HWAM 3110		x		x	x	x	x		x	x	x
HWAM 3120		x	x <sup>(1)</sup>	x	x	x	x	x	x	x	x
HWAM 3130		x	x <sup>(1)</sup>	x	x	x	x	x		x	x
HWAM 3520		x	x <sup>(1)</sup>	x	x	x	x	x	x	x	x
HWAM 3630		x	x <sup>(1)</sup>	x	x	x	x	x	x	x <sup>(3)</sup>	x
HWAM 3640		x	x <sup>(1)</sup>	x	x	x	x	x	x	x <sup>(3)</sup>	x
HWAM 3650		x	x <sup>(1)</sup>	x	x	x	x	x	x	x <sup>(3)</sup>	x
HWAM 3660		x	x <sup>(1)</sup>	x	x	x	x	x	x	x <sup>(3)</sup>	
HWAM 3740		x	x <sup>(1)</sup>	x <sup>(2)</sup>	x	x	x			x <sup>(2)</sup>	x <sup>(2)</sup>
HWAM 3760		x	x <sup>(1)</sup>	x <sup>(2)</sup>	x	x	x			x <sup>(2)</sup>	x <sup>(2)</sup>
HWAM 4110		x		x	x	x	x		x <sup>(2)</sup>	x <sup>(2)</sup>	x <sup>(2)</sup>
HWAM 4120		x		x	x	x	x		x <sup>(2)</sup>	x <sup>(2)</sup>	x <sup>(2)</sup>
HWAM 4130		x		x	x	x	x		x <sup>(2)</sup>	x <sup>(2)</sup>	x <sup>(2)</sup>
HWAM 4140		x		x	x	x	x		x <sup>(2)</sup>	x <sup>(2)</sup>	x <sup>(2)</sup>
HWAM 4150		x		x	x	x	x		x <sup>(2)</sup>	x <sup>(2)</sup>	x <sup>(2)</sup>
HWAM 4160		x		x	x	x	x		x <sup>(2)</sup>	x <sup>(2)</sup>	x <sup>(2)</sup>
HWAM 4240		x		x	x	x	x		x <sup>(2)</sup>	x <sup>(2)</sup>	x <sup>(2)</sup>
HWAM 4340		x		x	x	x	x		x <sup>(2)</sup>	x <sup>(2)</sup>	x <sup>(2)</sup>
HWAM 4510		x	x	x	x	x	x	x	x	x	
HWAM 4520		x	x	x	x	x	x	x	x	x	
HWAM 4530		x	x	x	x	x	x	x	x	x	
HWAM 4540		x	x	x	x	x	x	x	x	x	x
HWAM 4550		x	x	x	x	x	x	x	x	x	
HWAM 4560		x	x	x	x	x	x	x	x	x	x
HWAM 4620		x	x	x	x	x	x	x	x	x <sup>(1)</sup>	x
HWAM 4640		x	x	x	x	x	x	x	x	x <sup>(1)</sup>	x
HWAM 4660		x	x	x	x	x	x	x	x	x <sup>(1)</sup>	x
HWAM 5530		x	x	x	x	x	x	x	x <sup>(2)</sup>	x <sup>(2)</sup>	x <sup>(2)</sup>
HWAM 7150		x	x	x	x	x	x	x			x
HWAM Classic 4		x				x	x				x
HWAM I 30/55 - HWAM I 30/55s	x			x	x	x	x		x	x	x
HWAM I 30/65	x				x	x				x	x
HWAM I 40/55	x		x	x	x	x	x	x	x <sup>(4)</sup>	x <sup>(4)</sup>	x <sup>(4)</sup>

<sup>(1)</sup> Applies only to models with HWAM® SmartControl™. <sup>(2)</sup> Pending registration <sup>(3)</sup> Applies only to models with HWAM® Autopilot™.

<sup>(4)</sup> HWAM® Autopilot™: Yes. HWAM® SmartControl™: Pending registration. **NB!** The table shows the status at the time of the catalogue's publication. The current status can be obtained at any time from your HWAM dealer and can be checked on [www.hwam.com](http://www.hwam.com).

# Product overview

	Function					Design											Connection				
	Nominal heat output <5 kW	Nominal heat output 5-6 kW	Nominal heat output >6 kW	HWAM® Autopilot™	HWAM® SmartControl™	Classic door	Modern door	Side hinged door	Lift-up door	Optional right or left hinged door	Side glass	Wall-mounted	Pedestal or/and plinth	Heat storage compartment	White	Grey	Black	Soapstone cover/ Natural stone cover	Wood section	Combustion air system bottom	Combustion air system rear
HWAM 2610c	x			x		x		x			x	x	x			x	x			x	x
HWAM 2610m	x			x			x	x			x	x	x		x	x	x			x	x
HWAM 2620c	x			x		x		x			x	x				x	x			x	x
HWAM 2620m	x			x			x	x			x	x			x	x	x			x	x
HWAM 2630c	x			x		x		x			x					x	x			x	x
HWAM 2630m	x			x			x	x			x				x	x	x			x	x
HWAM 2640c	x			x		x		x								x	x			x	x
HWAM 2640m	x			x			x	x							x	x	x			x	x
HWAM 3110c	x			x		x		x			x	x				x	x			x	x
HWAM 3110m	x			x			x	x			x	x			x	x	x			x	x
HWAM 3120c	x			x	x	x		x								x	x			x	x
HWAM 3120m	x			x	x		x	x							x	x	x			x	x
HWAM 3130c	x			x	x	x		x					x			x	x			x	x
HWAM 3130m	x			x	x		x	x					x		x	x	x			x	x
HWAM 3520c	x			x	x	x		x					x			x	x	x		x	x
HWAM 3520m	x			x	x		x	x					x		x	x	x	x		x	x
HWAM 3630c		x		x	x	x		x			x					x	x			x	x
HWAM 3630m		x		x	x		x	x			x				x	x	x			x	x
HWAM 3640c		x		x	x	x		x								x	x	x		x	x
HWAM 3640m		x		x	x		x	x							x	x	x	x		x	x
HWAM 3650c		x		x	x	x		x			x			x		x	x			x	x
HWAM 3650m		x		x	x		x	x			x			x	x	x	x			x	x
HWAM 3660c		x		x	x	x		x						x		x	x	x		x	x
HWAM 3660m		x		x	x		x	x						x	x	x	x	x		x	x
HWAM 3740c	x			x	x	x		x								x	x			x	x
HWAM 3740m	x			x	x		x	x								x	x			x	x
HWAM 3760c	x			x	x	x		x						x		x	x			x	x
HWAM 3760m	x			x	x		x	x						x		x	x			x	x
HWAM 4110	x			x	x			x			x					x	x			x	x
HWAM 4120	x			x	x			x								x	x			x	x
HWAM 4130	x			x	x			x			x					x	x			x	x
HWAM 4140	x			x	x			x								x	x			x	x
HWAM 4150	x			x	x			x			x			x		x	x			x	x
HWAM 4160	x			x	x			x						x		x	x			x	x



# Product overview

	Function					Design											Connection				
	Nominal heat output <5 kW	Nominal heat output 5-6 kW	Nominal heat output >6 kW	HWAM® Autopilot™	HWAM® SmartControl™	Classic door	Modern door	Side hinged door	Lift-up door	Optional right or left hinged door	Side glass	Wall-mounted	Pedestal or/and plinth	Heat storage compartment	White	Grey	Black	Soapstone cover/ Natural stone cover	Wood section	Combustion air system bottom	Combustion air system rear
HWAM 4240	x			x	x			x								x	x	x		x	x
HWAM 4340		x		x	x			x								x	x	x		x	x
HWAM 4510c	x			x	x	x		x		x	x	x				x	x			x	x
HWAM 4510m	x			x	x		x	x		x	x	x		x		x	x			x	x
HWAM 4520c	x			x	x	x		x			x	x				x	x			x	x
HWAM 4520m	x			x	x		x	x			x	x		x		x	x			x	x
HWAM 4530c	x			x	x	x		x		x						x	x			x	x
HWAM 4530m	x			x	x		x	x		x				x		x	x			x	x
HWAM 4540c	x			x	x	x		x								x	x	x		x	x
HWAM 4540m	x			x	x		x	x						x		x	x	x		x	x
HWAM 4550c	x			x	x	x		x		x			x			x	x			x	x
HWAM 4550m	x			x	x		x	x		x			x	x		x	x			x	x
HWAM 4560c	x			x	x	x		x					x			x	x	x		x	x
HWAM 4560m	x			x	x		x	x					x	x		x	x	x		x	x
HWAM 4620c			x	x		x		x								x	x			x	x
HWAM 4620m			x	x			x	x						x		x	x			x	x
HWAM 4640c			x	x	x	x		x								x	x	x		x	x
HWAM 4640m			x	x	x		x	x						x		x	x	x		x	x
HWAM 4660c			x	x	x	x		x					x			x	x	x		x	x
HWAM 4660m			x	x	x		x	x					x	x		x	x	x		x	x
HWAM 5530c		x	x	x	x	x		x		x			x				x			x	x
HWAM 5530m		x	x	x	x		x	x		x			x				x			x	x
HWAM 7150c	x			x	x	x		x					x				x	x		x	x
HWAM 7150m	x			x	x		x	x					x				x	x		x	x
HWAM Classic 4			x	x				x									x		x		x
HWAM I 30/55			x	x					x								x			x	x
HWAM I 30/55s			x	x				x									x			x	x
HWAM I 30/65			x	x					x								x				x
HWAM I 40/55c		x	x	x	x	x		x		x							x			x	x <sup>1)</sup>
HWAM I 40/55m		x	x	x	x		x	x		x							x			x	x <sup>1)</sup>

<sup>1)</sup> HWAM® SmartControl™: See drawing.

# Test results

	EN 13240/13229					Art. 15a		NS 3058 NS 3059
	CO at 13% O <sub>2</sub>	CO at 13% O <sub>2</sub>	Particle emission at 13% O <sub>2</sub>	Flue gas temperature measured in the outlet socket	Flue gas mass flow	Particle emission	CO	Particle emission
	%	mg/m <sup>3</sup> <sub>n</sub>	mg/m <sup>3</sup> <sub>n</sub>	°C	g/s	mg/MJ	mg/MJ	g/kg
HWAM 2610, Autopilot™	0.10	1250	22	366	3.72	-	-	3.42
HWAM 2620, Autopilot™	0.10	1250	22	366	3.72	-	-	3.42
HWAM 2630, Autopilot™	0.10	1250	22	366	3.72	-	-	3.42
HWAM 2640, Autopilot™	0.10	1250	22	366	3.72	-	-	3.42
HWAM 3110, Autopilot™	0.07	875	22	300	5.10	-	-	2.05
HWAM 3120, Autopilot™	0.07	875	22	300	5.10	-	-	2.05
HWAM 3120, SmartControl™	0.08	1000	20	307	3.66	13	630	2.45
HWAM 3130, Autopilot™	0.07	875	22	300	5.10	-	-	2.05
HWAM 3130, SmartControl™	0.08	1000	20	307	3.66	13	630	2.45
HWAM 3520, Autopilot™	0.07	875	22	300	5.10	-	-	2.05
HWAM 3520, SmartControl™	0.08	1000	20	307	3.66	13	630	2.45
HWAM 3630, Autopilot™	0.09	1125	18	350	6.00	-	-	1.21
HWAM 3630, SmartControl™	0.10	1250	21	325	5.04	13	756	1.78
HWAM 3640, Autopilot™	0.09	1125	18	350	6.00	-	-	1.21
HWAM 3640, SmartControl™	0.10	1250	21	325	5.04	13	756	1.78
HWAM 3650, Autopilot™	0.09	1125	18	350	6.00	-	-	1.21
HWAM 3650, SmartControl™	0.10	1250	21	325	5.04	13	756	1.78
HWAM 3660, Autopilot™	0.09	1125	18	350	6.00	-	-	1.21
HWAM 3660, SmartControl™	0.10	1250	21	325	5.04	13	756	1.78
HWAM 3740, Autopilot™	0.07	875	22	300	5.10	-	-	_*
HWAM 3740, SmartControl™	0.08	1000	20	307	3.66	13	630	_*
HWAM 3760, Autopilot™	0.07	875	22	300	5.10	-	-	_*
HWAM 3760, SmartControl™	0.08	1000	20	307	3.66	13	630	_*
HWAM 4110, Autopilot™	0.09	1125	24	232	5.30	18	825	4.81
HWAM 4110, SmartControl™	0.08	1000	12	257	3.70	9	714	4.46
HWAM 4120, Autopilot™	0.09	1125	24	232	5.30	18	825	4.81
HWAM 4120, SmartControl™	0.08	1000	12	257	3.70	9	714	4.46
HWAM 4130, Autopilot™	0.09	1125	24	232	5.30	18	825	4.81
HWAM 4130, SmartControl™	0.08	1000	12	257	3.70	9	714	4.46
HWAM 4140, Autopilot™	0.09	1125	24	232	5.30	18	825	4.81
HWAM 4140, SmartControl™	0.08	1000	12	257	3.70	9	714	4.46
HWAM 4150, Autopilot™	0.09	1125	24	232	5.30	18	825	4.81
HWAM 4150, SmartControl™	0.08	1000	12	257	3.70	9	714	4.46
HWAM 4160, Autopilot™	0.09	1125	24	232	5.30	18	825	4.81
HWAM 4160, SmartControl™	0.08	1000	12	257	3.70	9	714	4.46

\* Pending registration

**NB!** Due to the constant improvements of our products the valid values may vary from the above mentioned. Updated values are available at your local HWAM retailer and can be seen on [www.hwam.com](http://www.hwam.com).



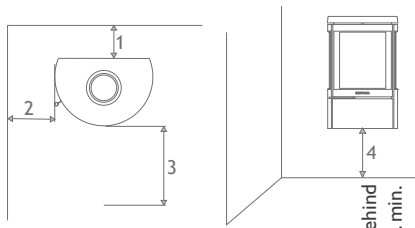


# Test results

	EN 13240/13229					Art. 15a		NS 3058 NS 3059
	CO at 13% O <sub>2</sub>	CO at 13% O <sub>2</sub>	Particle emission at 13% O <sub>2</sub>	Flue gas temperature measured in the outlet socket	Flue gas mass flow	Particle emission	CO	Particle emission
	%	mg/m <sup>3</sup> <sub>n</sub>	mg/m <sup>3</sup> <sub>n</sub>	°C	g/s	mg/MJ	mg/MJ	
HWAM 4240, Autopilot™	0.09	1125	24	232	5.30	18	825	4.81
HWAM 4240, SmartControl™	0.08	1000	12	257	3.70	9	714	4.46
HWAM 4340, Autopilot™	0.09	1125	25	355	5.10	17	717	3.73
HWAM 4340, SmartControl™	0.10	1250	28	321	4.70	18	797	1.16
HWAM 4510, Autopilot™	0.08	1000	24	312	4.1	18	752	3.01
HWAM 4510, SmartControl™	0.06	750	19	324	4.0	15	586	2.16
HWAM 4520, Autopilot™	0.08	1000	24	312	4.1	18	752	3.01
HWAM 4520, SmartControl™	0.06	750	19	324	4.0	15	586	2.16
HWAM 4530, Autopilot™	0.08	1000	24	312	4.1	18	752	3.01
HWAM 4530, SmartControl™	0.06	750	19	324	4.0	15	586	2.16
HWAM 4540, Autopilot™	0.08	1000	24	312	4.1	18	752	3.01
HWAM 4540, SmartControl™	0.06	750	19	324	4.0	15	586	2.16
HWAM 4550, Autopilot™	0.08	1000	24	312	4.1	18	752	3.01
HWAM 4550, SmartControl™	0.06	750	19	324	4.0	15	586	2.16
HWAM 4560, Autopilot™	0.08	1000	24	312	4.1	18	752	3.01
HWAM 4560, SmartControl™	0.06	750	19	324	4.0	15	586	2.16
HWAM 4620, Autopilot™	0.08	1000	28	320	5.9	19	659	1.74
HWAM 4640, Autopilot™	0.08	1000	28	320	5.9	19	659	1.74
HWAM 4640, SmartControl™	0.06	750	29	334	6.6	19	515	1.88
HWAM 4660, Autopilot™	0.08	1000	28	320	5.9	19	659	1.74
HWAM 4660, SmartControl™	0.06	750	29	334	6.6	19	515	1.88
HWAM 5530, Autopilot™	0.061	758	16	326	5.5	11	383	2.65
HWAM 5530, SmartControl™	0.077	963	16	299	4.6	10	552	1.87
HWAM 7150, Autopilot™	0.06	750	19	282	4.04	13	457	2.05
HWAM 7150, SmartControl™	0.07	875	19	276	4.27	14	546	2.45
HWAM Classic 4	0.10	1250	36	255	9.90	-	-	-
HWAM I 30/55 - HWAM I 30/55s	0.09	1125	26	296	5.51	-	-	3.31
HWAM I 30/65	0.12	1500	28	350	9.07	-	-	-
HWAM I 40/55 Autopilot™	0.061	758	16	326	5.5	11	383	2.65
HWAM I 40/55 SmartControl™	0.077	963	16	299	4.6	10	553	1.87

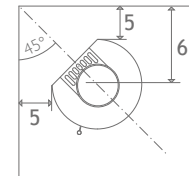
**NB!** Due to the constant improvements of our products the valid values may vary from the above mentioned. Updated values are available at your local HWAM retailer and can be seen on [www.hwam.com](http://www.hwam.com).

# Distance to combustible materials

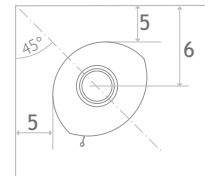


	1. Behind Cm. min.	2. Side Cm. min.	3. Distance to furnishing in front Cm. min.	4. Above combustible floor Cm. min.	May be installed on a 12 mm thick hearth on combustible floor (UK)	5. Distance to combustible wall, corner location Cm. min.	6. Distance to combustible wall, corner location Cm. min.
HWAM 2610	19	36	80	3 <sup>(4)</sup>	× <sup>(8)</sup>	34 <sup>(3)</sup>	56 <sup>(3)</sup>
HWAM 2620	19	36	80	3 <sup>(4)</sup>	× <sup>(8)</sup>	20 <sup>(3)</sup>	42 <sup>(3)</sup>
HWAM 2630	19	36	80	-	×	34 <sup>(3)</sup>	56 <sup>(3)</sup>
HWAM 2640	19	36	80	-	×	20 <sup>(3)</sup>	42 <sup>(3)</sup>
HWAM 3110	10	20	80	3 <sup>(4)</sup>	× <sup>(8)</sup>	13	34
HWAM 3120	10	20	80	-	×	13	34
HWAM 3130	10	20	80	-	×	13	34
HWAM 3520	10	20	80	-	×	13	43
HWAM 3630	10	40	90	-	×	35 <sup>(3)</sup>	63 <sup>(3)</sup>
HWAM 3640	10	40	90	-	×	20 <sup>(3)</sup>	48 <sup>(3)</sup>
HWAM 3650	10	40	90	-	×	35 <sup>(3)</sup>	63 <sup>(3)</sup>
HWAM 3660	10	40	90	-	×	20 <sup>(3)</sup>	48 <sup>(3)</sup>
HWAM 3740	10	35	90	-	×	9	33
HWAM 3760	10	35	90	-	×	9	33
HWAM 4110	10	42	90	-	×	10	35,5
HWAM 4120	15	42	110	-	×	10	35,5
HWAM 4130	10	42	90	-	×	10	35,5
HWAM 4140	15	42	110	-	×	10	35,5
HWAM 4150	10	42	90	-	×	10	35,5
HWAM 4160	15	42	110	-	×	10	35,5
HWAM 4240	15	42	110	-	×	10	36,8
HWAM 4240, stone cover	15	42	110	-	×	10	36,8
HWAM 4340	11	25	120	-	×	13	34,5
HWAM 4340, stone cover	11	25	120	-	×	13	34,5
HWAM 4510	10	59	120	28,5 <sup>(6)</sup>	× <sup>(9)</sup>	33	57
HWAM 4520	10	35	110	28,5 <sup>(6)</sup>	× <sup>(9)</sup>	7	31
HWAM 4530	10	59	120	-	×	33	57
HWAM 4540	10	35	110	-	×	7	31
HWAM 4540, stone cover	10	40	110	-	×	7	31
HWAM 4550	10	59	120	-	×	33	57
HWAM 4560	10	35	110	-	×	7	31
HWAM 4560, stone cover	10	40	110	-	×	7	31
HWAM 4620	7 <sup>(5)</sup> /20	40 <sup>(6)</sup> /35	130	-	×	12 <sup>(5)</sup> /12	41
HWAM 4640	7 <sup>(5)</sup> /20	40 <sup>(6)</sup> /35	130	-	×	12 <sup>(5)</sup> /12	41
HWAM 4640, stone cover	7 <sup>(5)</sup> /20	45 <sup>(6)</sup> /45	140	-	×	15 <sup>(5)</sup> /15	44
HWAM 4660	7 <sup>(5)</sup> /20	40 <sup>(6)</sup> /35	130	-	×	12 <sup>(5)</sup> /12	41
HWAM 4660, stone cover	7 <sup>(5)</sup> /20	45 <sup>(6)</sup> /45	140	-	×	15 <sup>(5)</sup> /15	44
HWAM 5530	0 <sup>(6)</sup> /5	0	120	-	×	0	47,7
HWAM 7150	5	31	80	-	×	5 <sup>(3)</sup>	33
HWAM Classic 4	10	25	80	-	×	10 <sup>(3)</sup>	39 <sup>(3)</sup>
HWAM I 30/55/HWAM I 30/55s	12/6/15 <sup>(1)</sup>	8 <sup>(1)</sup>	80	30	-	-	-
HWAM I 30/65	4/4/14 <sup>(1)</sup>	4 <sup>(2)</sup>	80	30	-	-	-
HWAM I 40/55	5 <sup>(7)</sup>	5 <sup>(7)</sup>	120	35	-	-	-

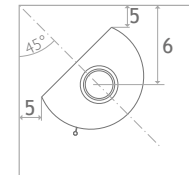
HWAM 2610  
HWAM 2620  
HWAM 2630  
HWAM 2640



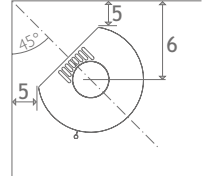
HWAM 3110  
HWAM 3120  
HWAM 3130



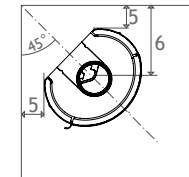
HWAM 3520



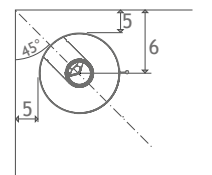
HWAM 3630  
HWAM 3640  
HWAM 3650  
HWAM 3660



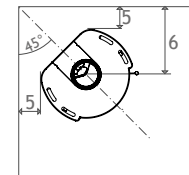
HWAM 3740  
HWAM 3760



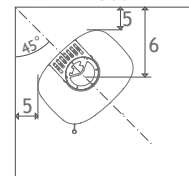
HWAM 4110  
HWAM 4120  
HWAM 4130  
HWAM 4140  
HWAM 4150  
HWAM 4160



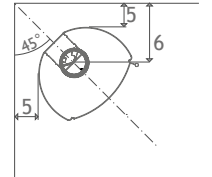
HWAM 4240



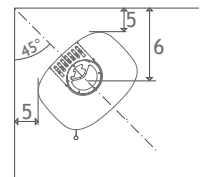
HWAM 4510  
HWAM 4520  
HWAM 4530  
HWAM 4540  
HWAM 4550  
HWAM 4560



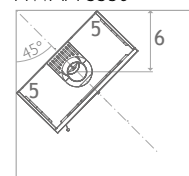
HWAM 4340



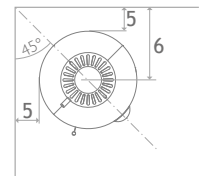
HWAM 4620  
HWAM 4640  
HWAM 4660



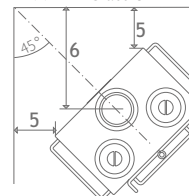
HWAM 5530



HWAM 7150



HWAM Classic 4



<sup>(1)</sup> Thickness of insulation, behind/under/over.  
<sup>(2)</sup> Thickness of insulation. <sup>(3)</sup> **Important!** All dimensions in connection with corner installation are only recommendations. Contact your HETAS Engineer for a clarification. <sup>(4)</sup> This distance requirement is met when the stove is mounted on a plinth.  
<sup>(5)</sup> With insulated flue pipe <sup>(6)</sup> This distance requirement is met when the stove is mounted on a high plinth. <sup>(7)</sup> Distance to non combustible insulation against combustible wall. <sup>(8)</sup> Can be installed on a 12 mm hearth, when mounted on a 3 cm plinth. <sup>(9)</sup> Can be installed on a 12 mm hearth when mounted on low plinth.



